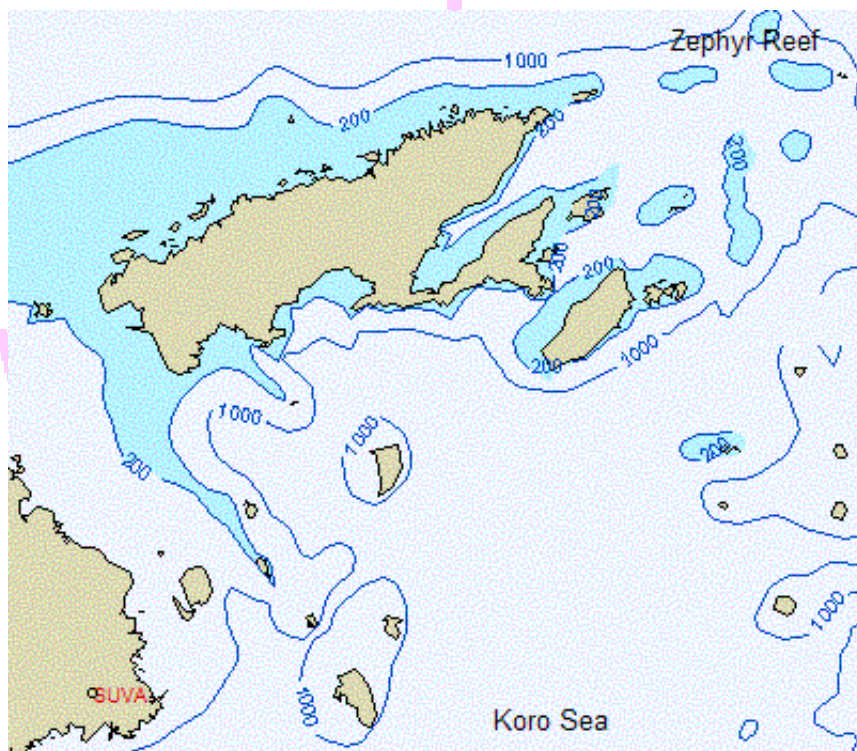


Carpé Diem's Cruising Guide To A Secret Fiji

Vanualevu



By Hilton on Spindrift11

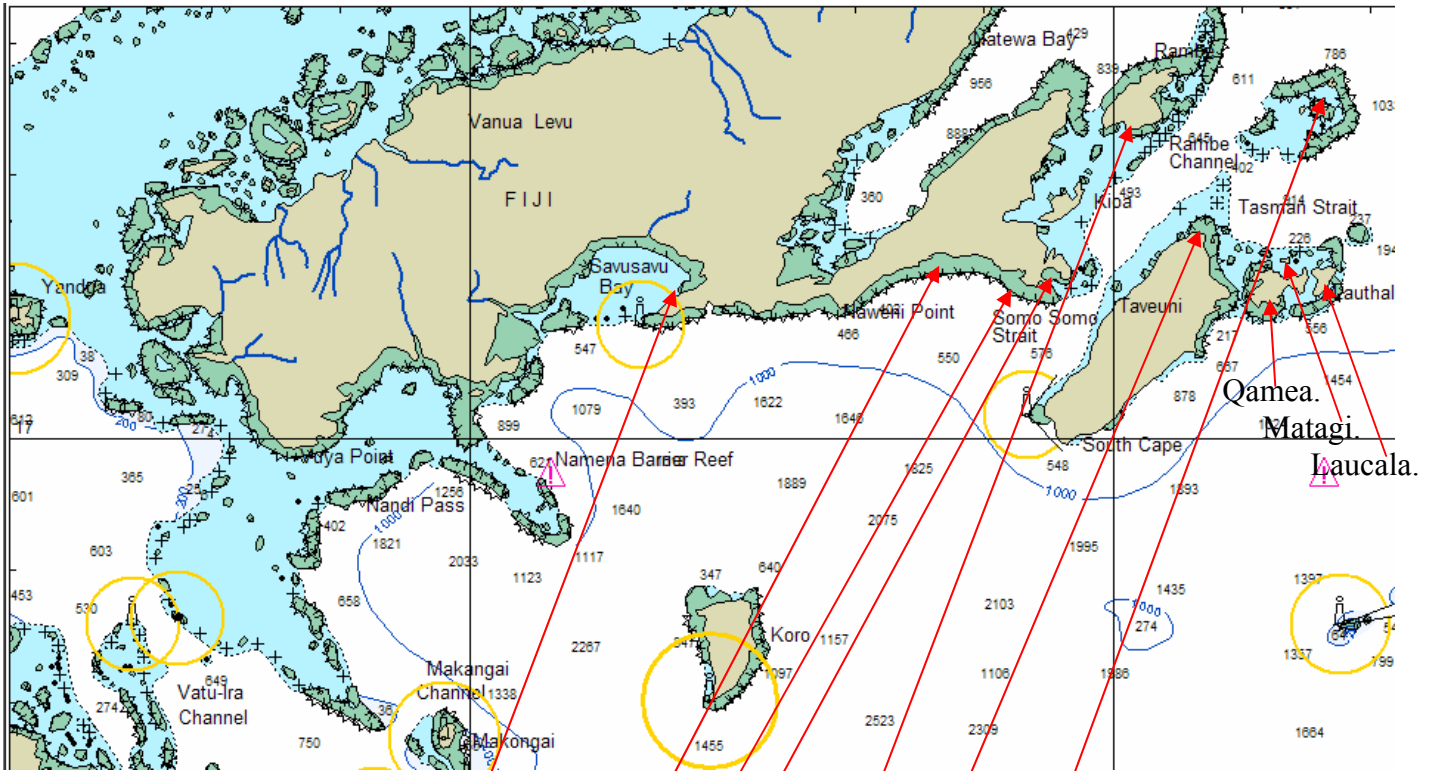
There will be no lending, selling, trading, showing, sharing, giving away or discussing this guide with fellow cruisers or any other interested parties.
You will not acknowledge to others that you have seen this Guide on the pain of having to share your anchorages.

Index

Albert cove	See Motawa	Nuku	11 12 13
Budd Reef	2 9 13	Nukudamu	17 19
Basa	15 26 27	Nukumala	29
Bekana	16 18 19	Nukurauvula	31
Bukonikai	11	Nukusa	18 19
Bulailai	30 31	Qamea	2 9
Daku	24	Qaratoka	16 17 18
Dakuniba	2 6 8 5	Rukuruku	30
Dalice	16 18	Savusavu	2 3 4 9 22 30 31
Draketi	25 27 28 29	Somosomo	8
Eritabeta	11 12 13	Somosomo (<i>Gau</i>)	3
Garaniuca	18	Taveuni	4 8 14
Gau	3 31	Tiligica	16 19
Kia	16 23 24 25 26	Tivi	21
Kioa	9	Udu	14 16 17
Labasa	15 22	Vanualevu	2 14 15 16 24 30 31
Laucala	9 10 31	Verevere	20
Lautoka	31	Viani	5 7 9
Ligau	22 24	Vorovoro	21 22 23
Ligaulevu	22	Vunicodi	16 17
Luvaibulu	26	Vuruna	16 17
Matagi	2 9	Wainikoro	16 20
Motawa	11 12 14	Wairiki	8 14
Nabekavu	27 28	Yadua	24 30 31
Nabouono	16 17	Yaro	24
Naivaka	30	Yasawa	17 31
Nakalou	25 27 28		
Nakama	2		
Nakawaga	21 22		
Namata	9		
Nananu	30 31		
Naqelelevu	14 31		
Nasasobo	2 5 6 7 8		
Nasealevu	19 21		
Naselesele	2 8 9		
Nauore	29 30		
Navidamu	27		
Naviqiri	29		
Nawaikama	3		
Nubu	18		

Vanualevu South Coast

For Navigation: *Charts and Mark 1 Eyeball.*



Savusavu.

Fawn Harbour.

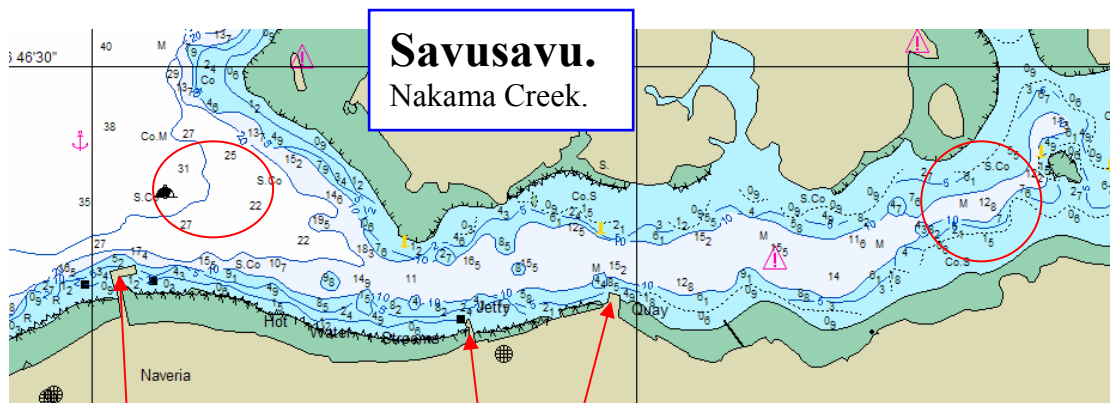
Dakuniba. Nasasobo

Vivian Bay.

Rabi.

Mate. (Naselesele Pt.)

Budd Reef

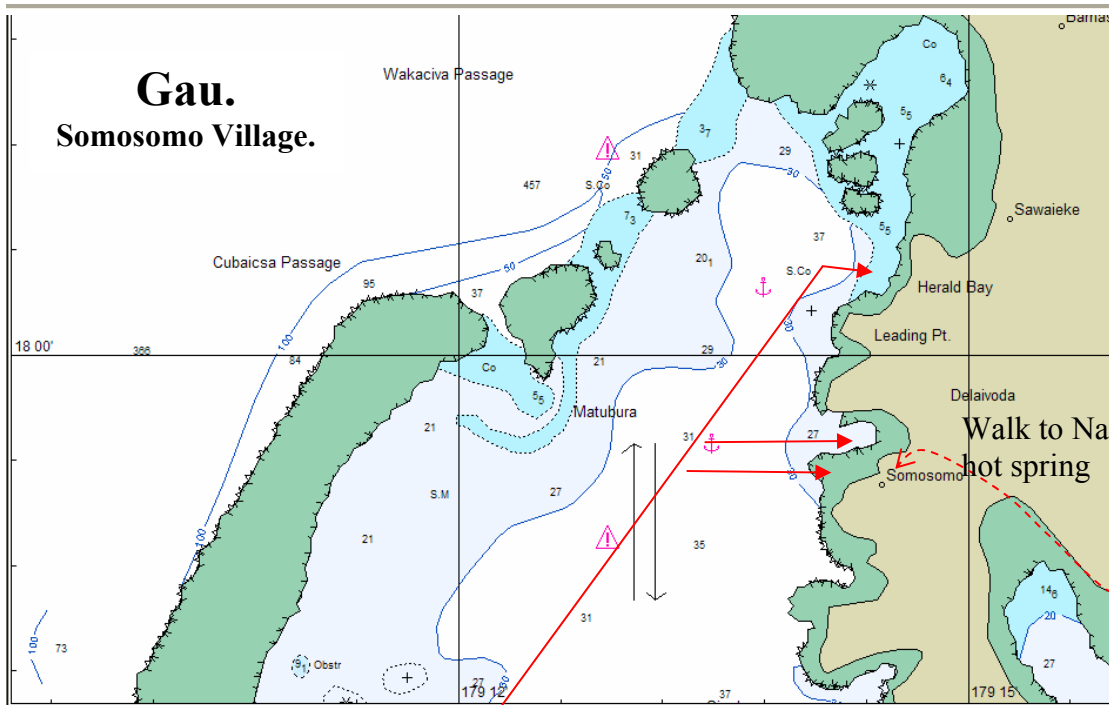


Main Shipping Wharf.

Waitui Marina.

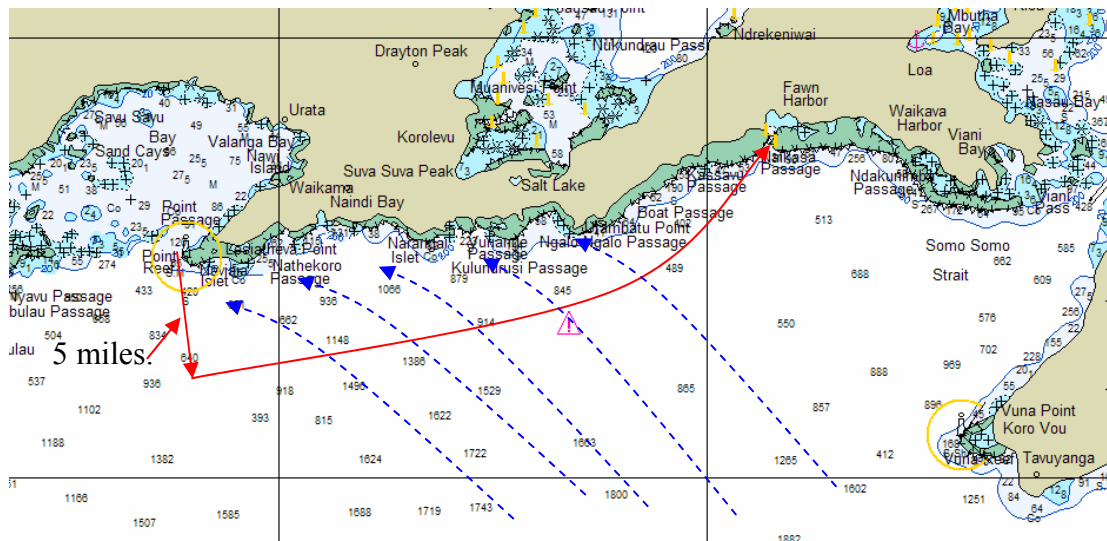
Copra Shed.

Anchoring free in areas of circles. Otherwise pick up and pay for a mooring. We prefer to use the Waitui Marina. Similar price to the Copra Shed.



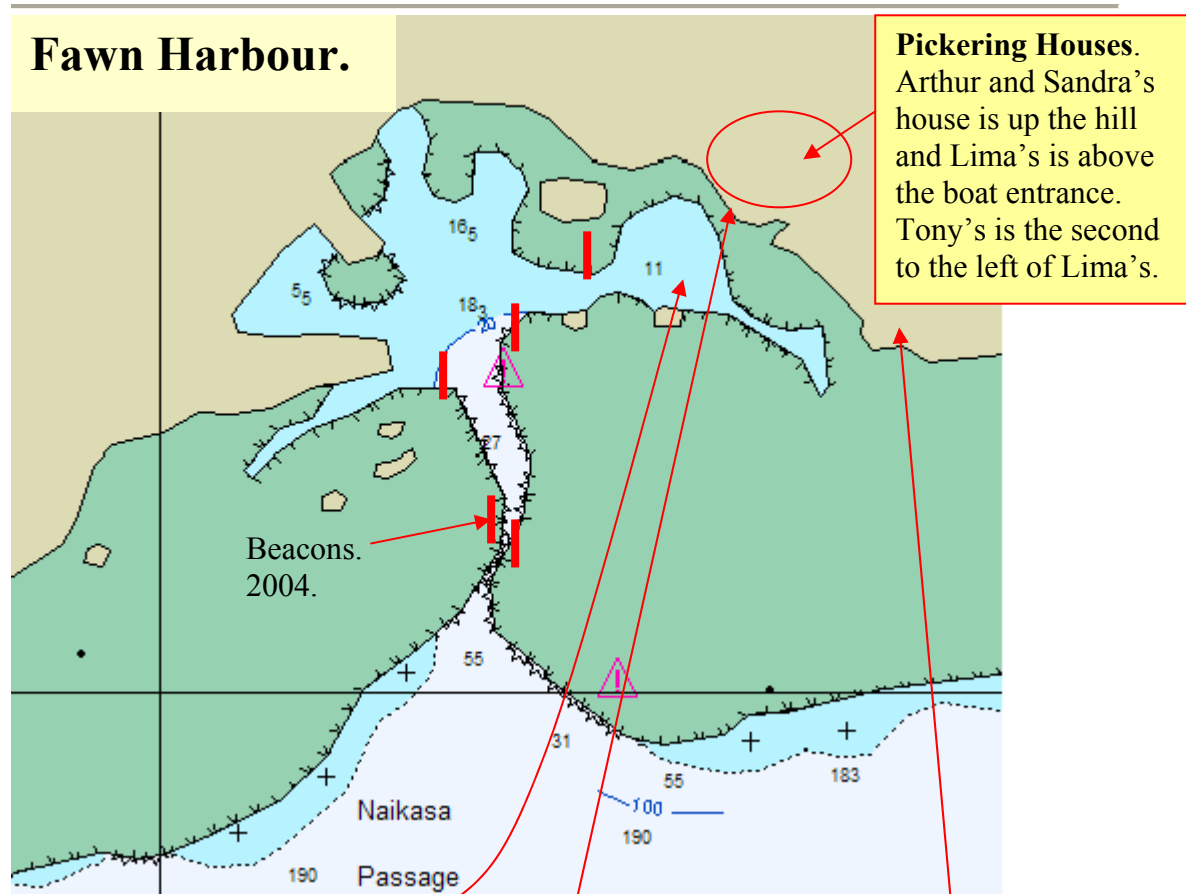
Anchor here. This chart is showing too much coral outside Somosomo. There is a sandy patch there not shown. The slot just to the north is the quietest anchorage but it is 18 m deep. We stayed there in 1994 and 1995. Ask for Apo and Kelly who we visited both times. Gau is an interesting stop. The people proud of their culture and are living more simply than some other areas. The lagoon is famous for Walu fishing.

East from Savusavu.



Spindrifts advised route from Savusavu or Point Reef to Fawn Harbour or East when the breeze is from the S.E. or E.S.E. As you go east the breeze starts to veer more aft. The breeze flows along the coast to the west necessitating lots of tacks otherwise. If

the breeze is from the East it makes a long hot day with little wind. Taveuni is so big it really affects the weather at all times.



Very safe anchorage.

Pickering entrance through the mangroves.

Resort sells beer at the bar.

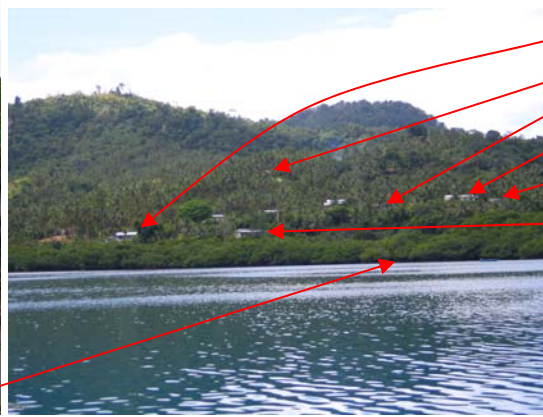
Best to anchor the dinghy. If the tide comes in someone always brings the dinghy up. Anchor in the circle for best access to Pickering's and the hot spring. The hot spring is great for a wash. Good to do about 3:30pm and get back to the boat at dusk ready for drinkies all relaxed and clean. The kids will just want to sleep.

Visit Arthur and Sandra Pickering and family up the hill on the other side of the road. They will tell you how to find the hot spring. Say hullo from us. We have visited many times and will be back in June 2006.

If you stay long enough you will meet most of the extended family and have an enjoyable time.



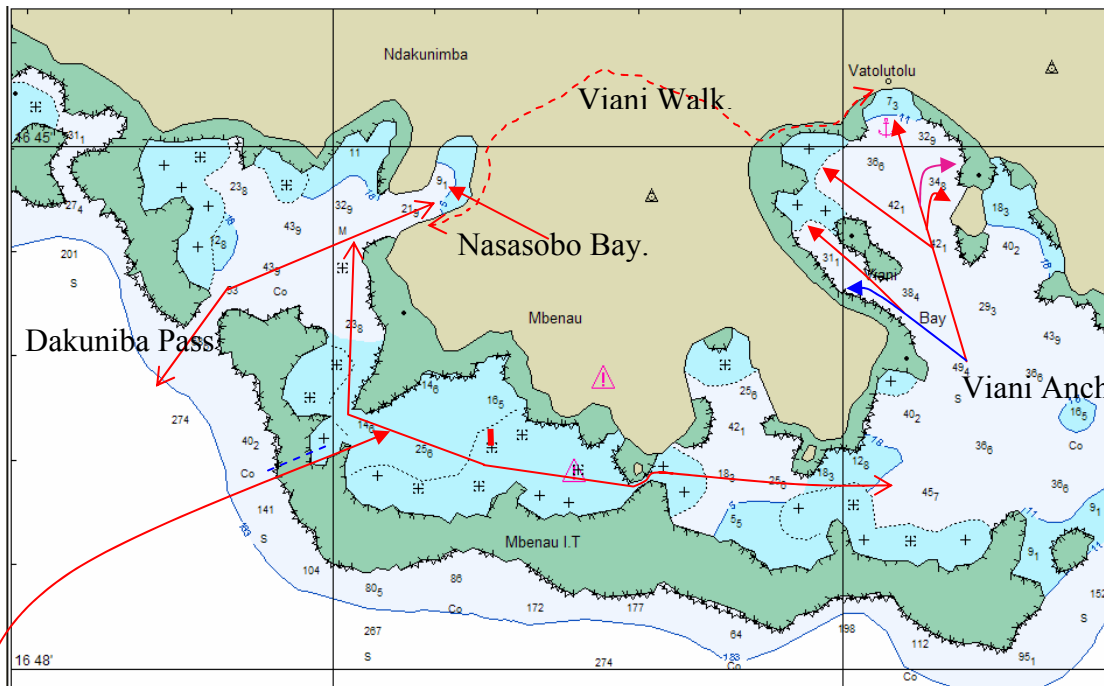
Dinghy Entrance to Pickering's.



The Pickering Village.

- Young Tony
- Arthur and Sandra.
- Landers.
- Caroline.
- Joe.
- Lima.

Nasasobo To Viani.



Nasasobo Bay is the most safe and quiet anchorage that we know on the SE coast. There are two very good cyclone holes here in the corner of the bay and in Bat creek.

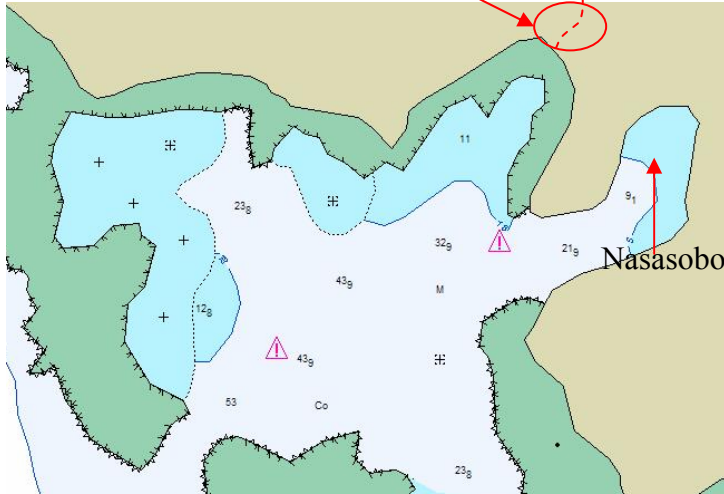
The passage along the inside of the reef from Nasasobo to Viani is not difficult. Best to do your own navigation as Calder's route is too difficult to follow today.

In good weather it is nice to stay the night out at the reef and snorkel during the day. Dinghy across the reef to the west of the black rocks (*Blue dashed line*) and snorkel outside.

Viani Bay. Anchorages are not as good as they appear. The Breeze tends to blow into Viani. Although deep we prefer to anchor in the corner North of the Island

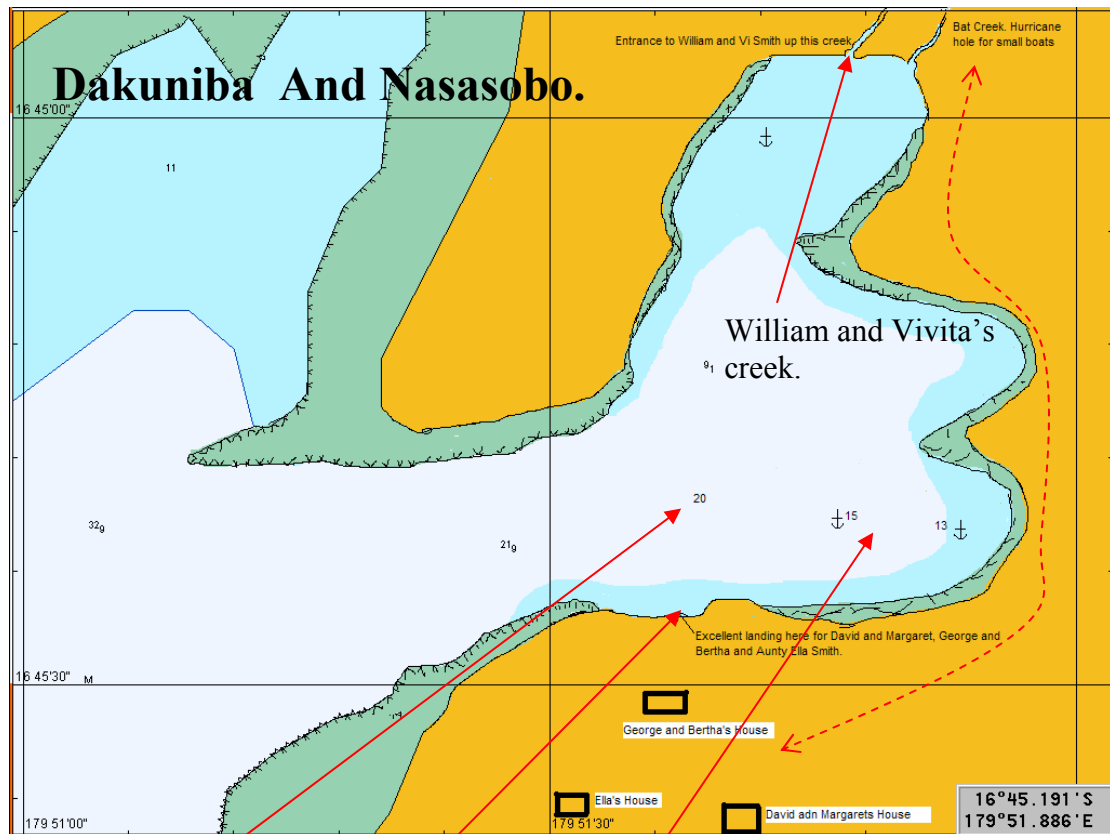
on this chart. (Magenta.) The locals say that the safest anchorage is the one marked blue. Good sand in close.

Dakuniba. Village



Visit Dakuniba and do Sevusevu with the Chief, George. His domain is the whole area including Nasasobo so Sevusevu should be offered after you have anchored in Nasasobo which is a better anchorage. Dinghy to Dakuniba. You can anchor there safely in good sand. Not that the reef is as in the next chart of Nasasobo and not this one.

There is an excellent short walk up a beautiful rocky stream at the back of the village to some ancient petroglyphs that are worth seeing. George will detail someone to show you the way. The stream and waterfalls are beautiful. It is a lovely place for that afternoon wash on a hot day.



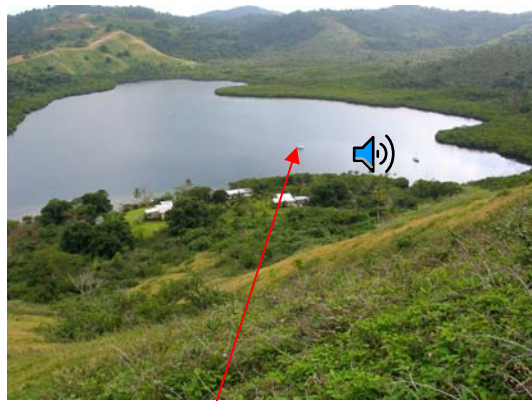
Nasasobo Bay.

Landing.

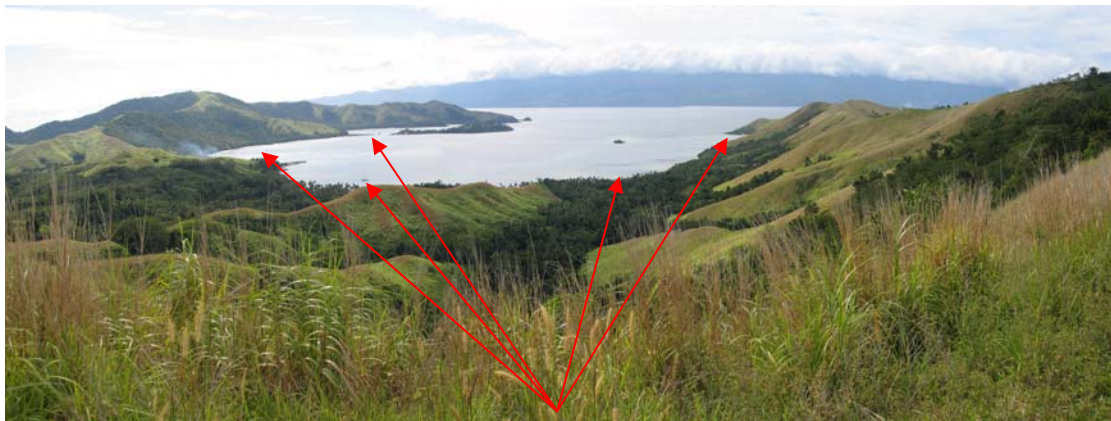
Best anchorage is between the 13 and 15 m depths.
Say hullo from us. We have visited many times and will be back in June 2006.

Nasasobo Walks:

1. Top of hill behind houses to view coast, entrance and Bay.
2. From there around ridge to the NE as far as you want to go. Can go to trig Stn.
3. Around the Bay to William and Vivita's.
4. Around the Bay and over the hill to Viani. (*This is a beautiful longer walk. 2 Hrs each way.*) Worth doing to check out Viani Bay anchorages.
5. From William and Vivita's up to her garden then up the hill to the left . (*Grand Bay View*).



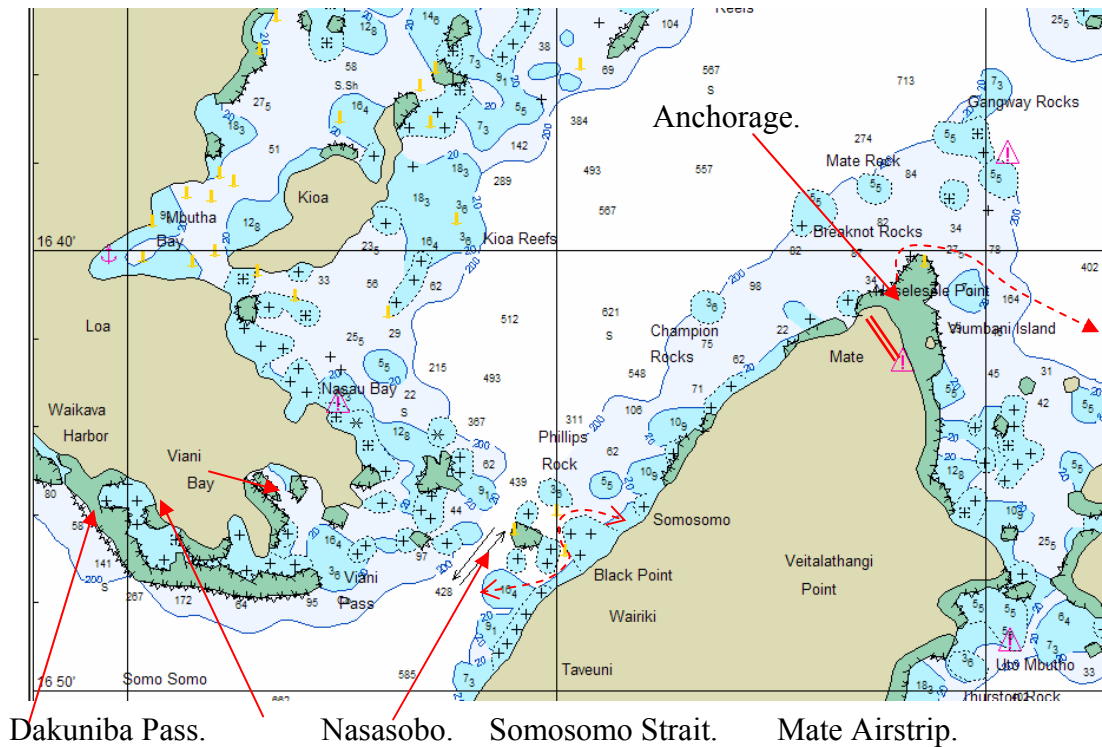
Nasasobo. Spindrift at anchor.



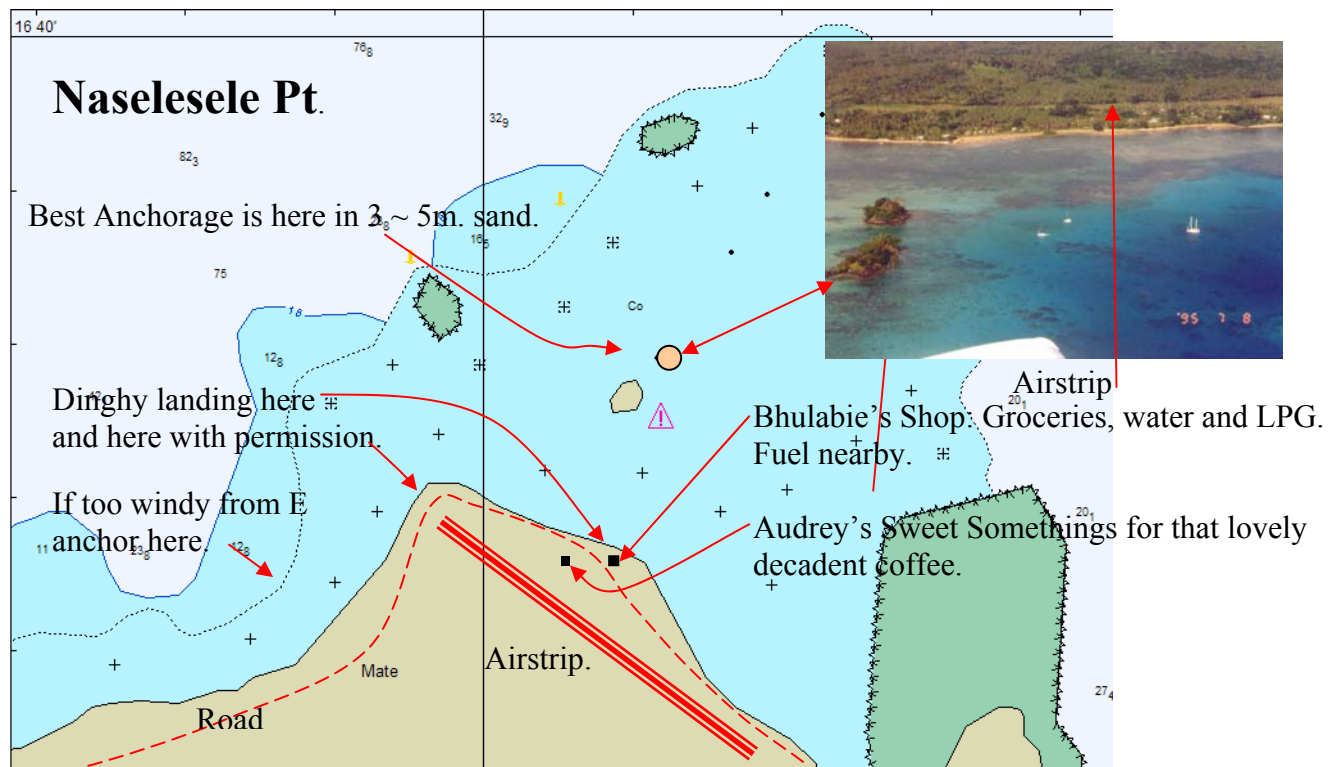
Viani Anchorages.

Views into Viani on the walk from Nasasobo.

Somosomo, Wairiki. Taveuni Is.



Somosomo, Wairiki and Weiyevo anchorages tend to be uncomfortable and roilly with the safest one being near the “new wharf” at Black point. See Calder. All provisions can be got in this area but we prefer Naselesele Pt as it is a much nicer anchorage and you can have a decadent coffee at Audrey’s Sweet Somethings.

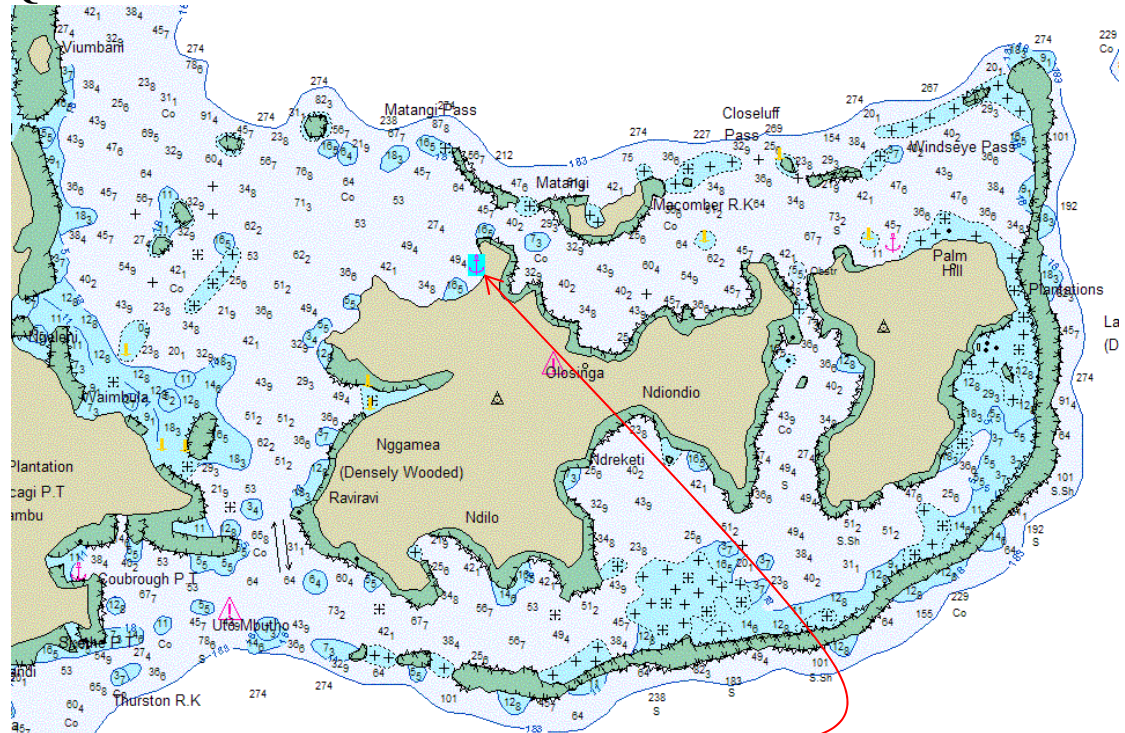


We believe Naselesele Pt is the best place to collect and drop off visitors for flights as the boat is already in the cruising grounds. It is a long sail from Savusavu to as good an area as this.

From here it is easy to visit Viani, Nasasobu, Rabi, Kioa, Budd Reef Islands, Matagi, Qamea and Laucala.

Laucala is a good place to step off to the Lau. i.e. The nearest anchorage.

Qamea.



Visit the Mitchell family at their plantation in Namata Bay.

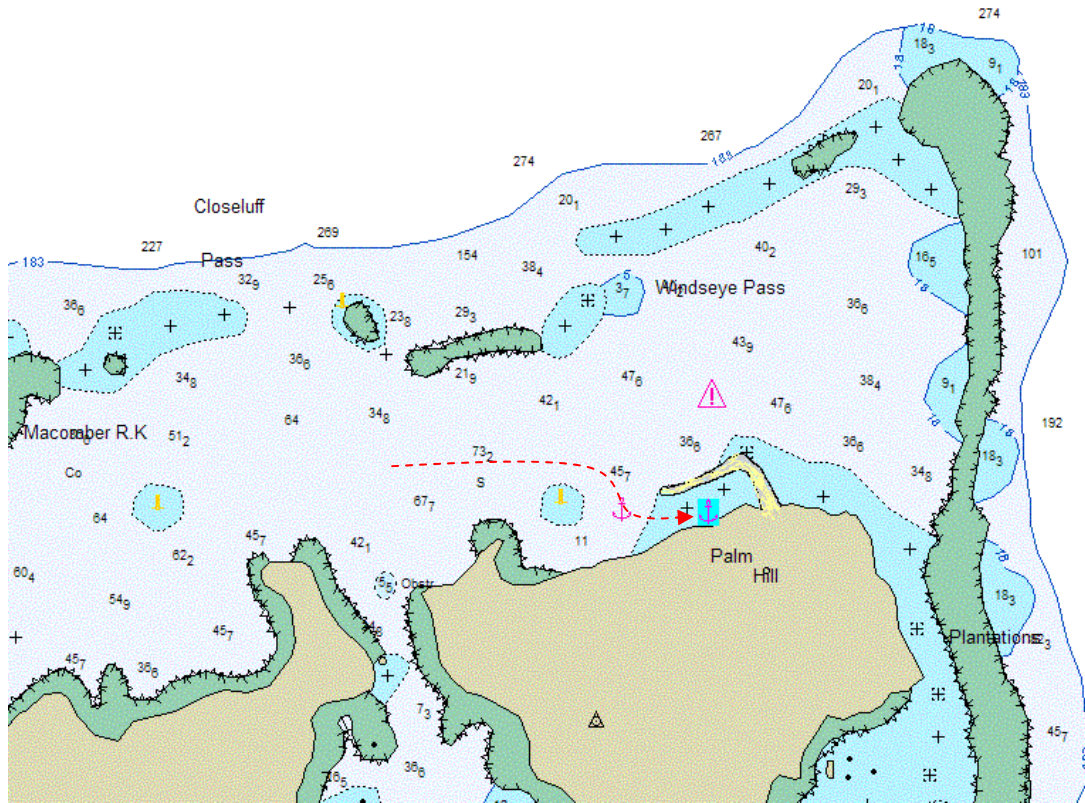
Laucala and Matagi also have anchorages. The calmest being at Laucala in behind the breakwater. If the breeze is Easterly Qamea and Namata bay are roilly.

There are many places to dive here. One of the easy fun dives if it is calm is at the wreck in the pass immediately to the West of Qamea. Nemo should be here.

Matagi Anchorage and Dive



Laucala

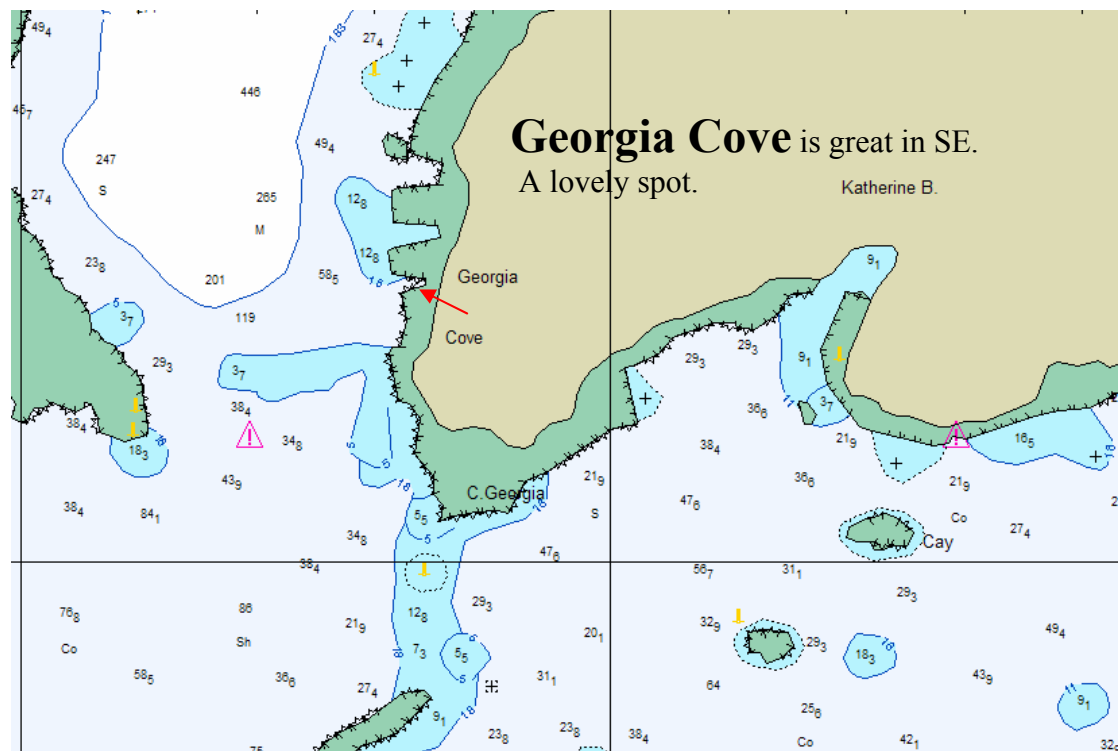
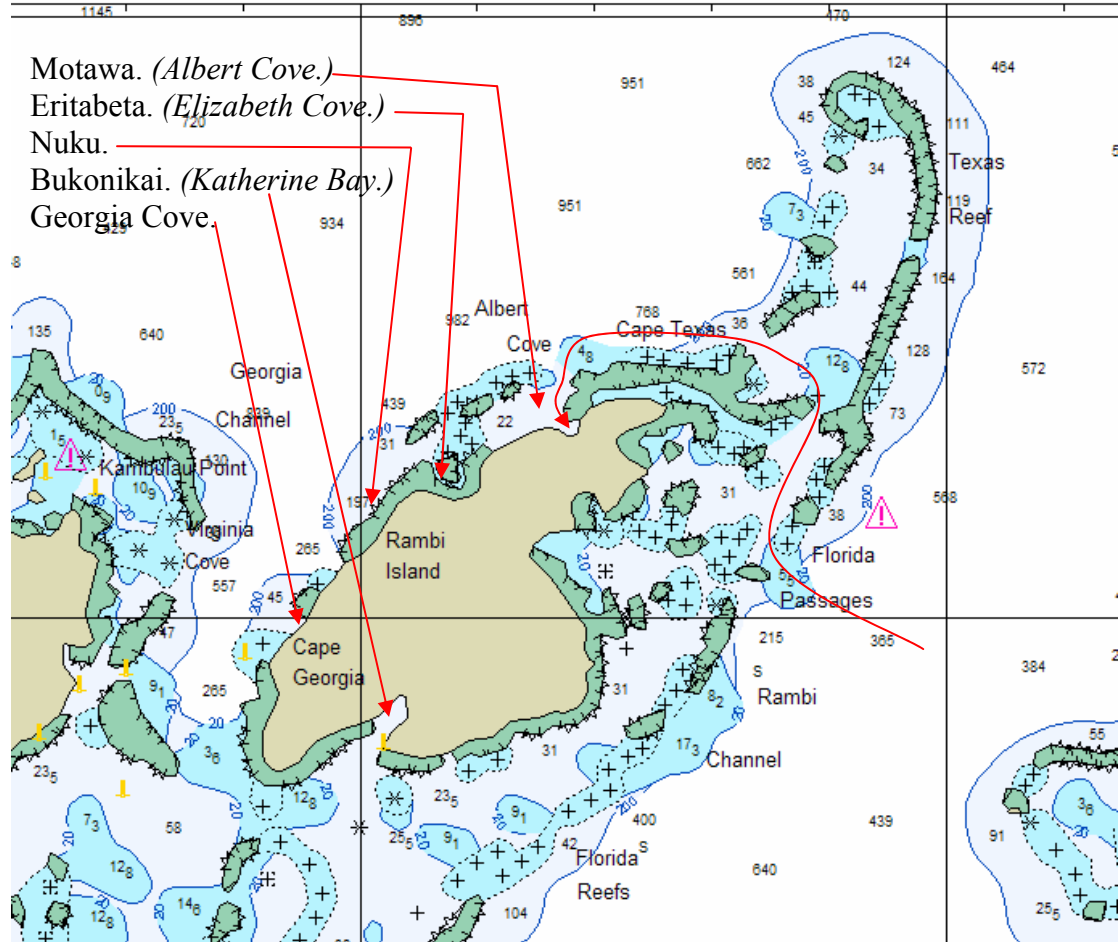


At Laucala go ashore and ask if you can walk to the top of Palm Hill. It is an easy walk on a plantation road with a grand view at the top over the plantation and to the Lau.

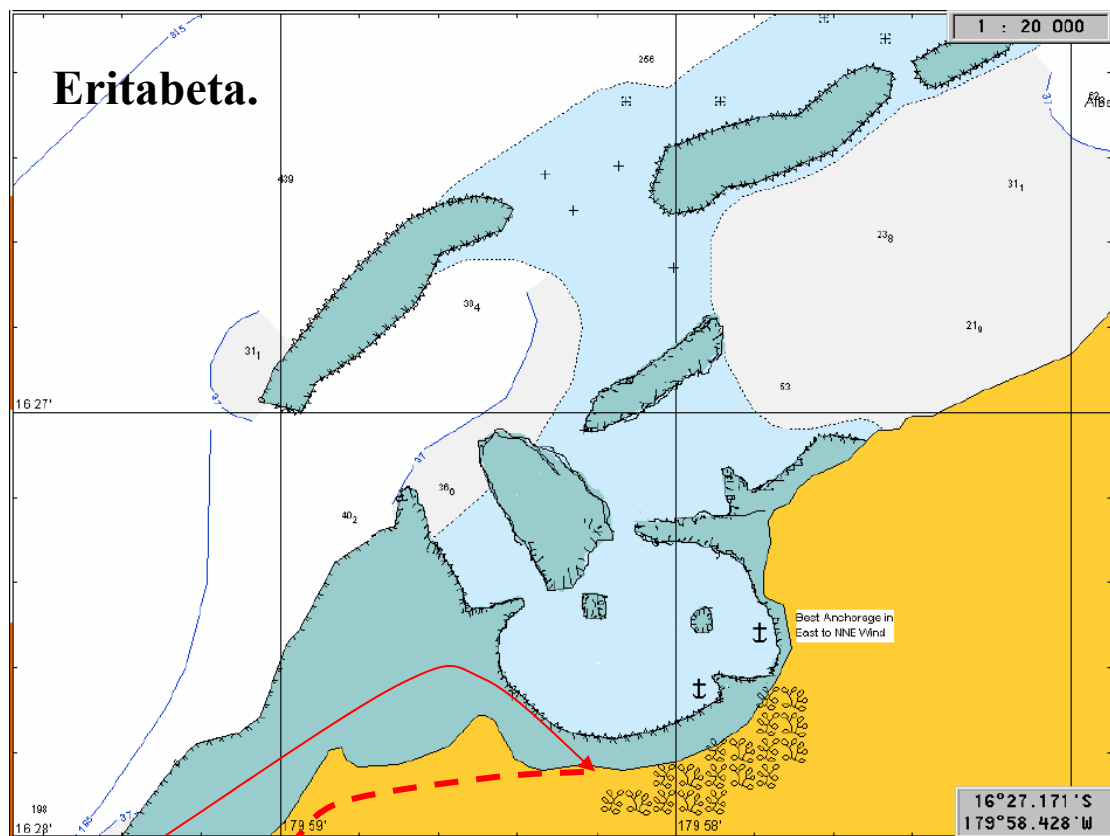
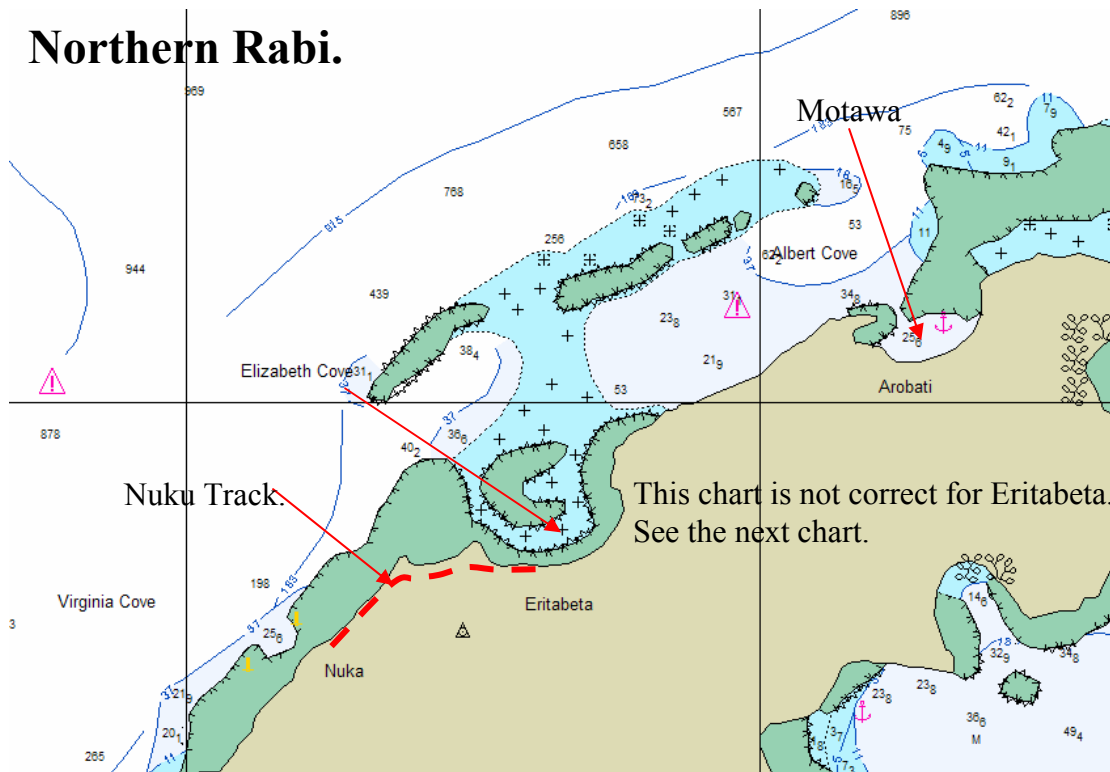


Rabi.

These people are of Banaban decent and speak Banaban and not Fijian as a first language.



Northern Rabi.



Walk to Nuku from here. It is a lovely walk. Better than anchoring at Nuku. Nuku is OK in SE but only then.

Eritabeta is a very good anchorage. Better than Motawa in NE. There is a small village here. Ask for Babaraua (*Pronounced Papparaua*) and Taketi (*Pronounced Takais*). I sailed Babaraua's Wa. (*Canoe*)

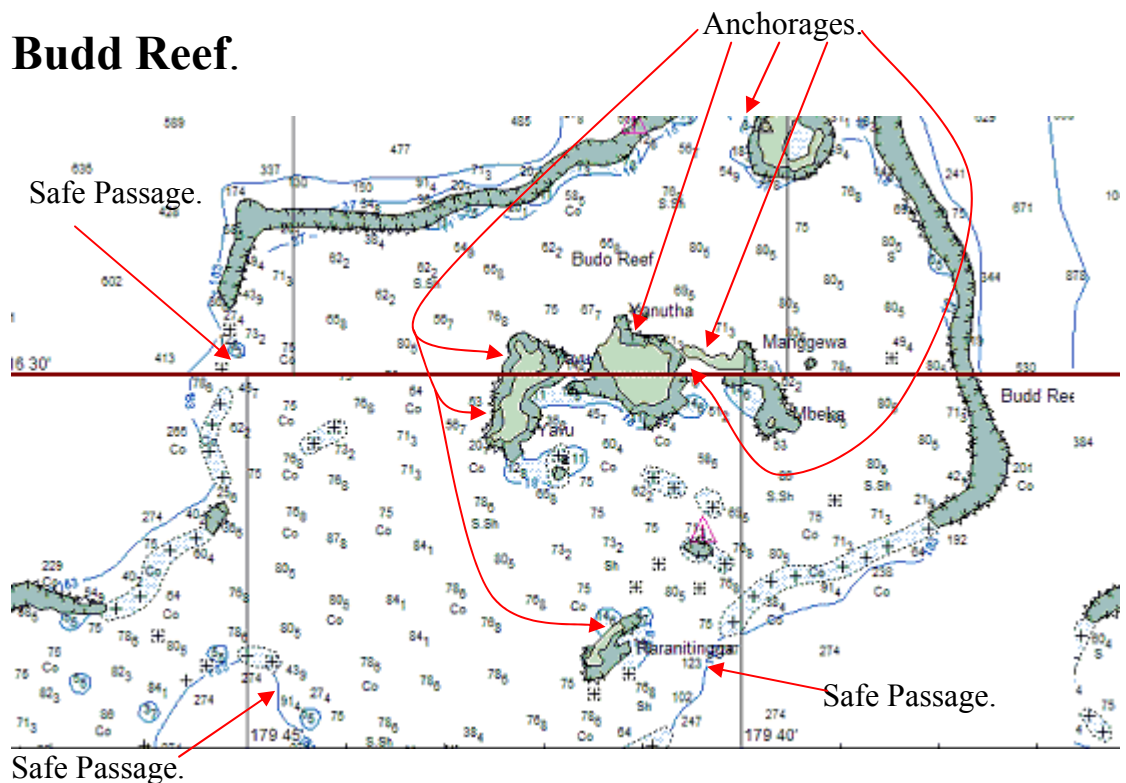
Eritabeta has the best water in Rabi. It is beautiful, clear, potable spring water on tap in the village. Ask Babaraua.

Continued over

Say hullo from us. We have visited many times and will be back in 2006. According to some locals no boats other than Spindrift have visited here since we were there in 1995.

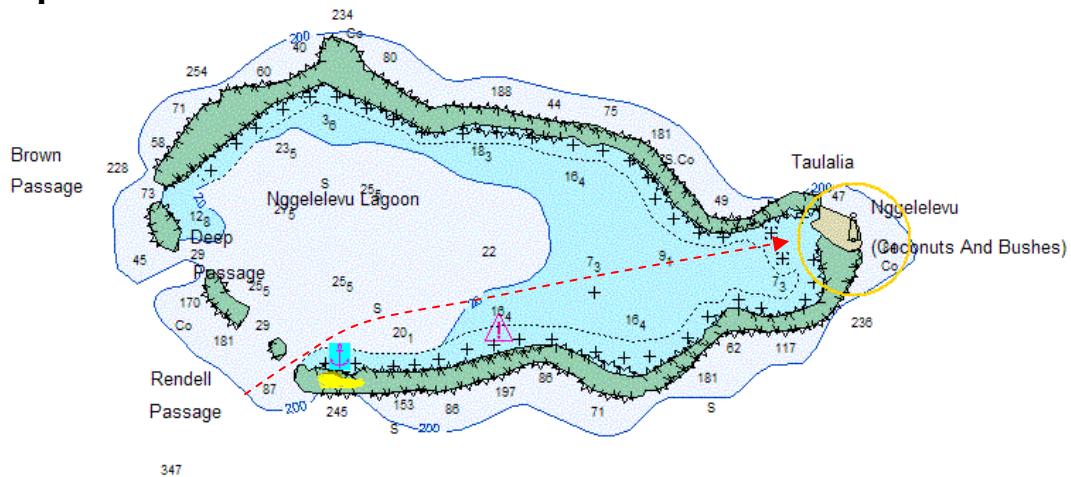
When visiting Nuku visit the Island Council Office and see if you can view the video called *Go Tell the Judge*. It tells the story of Rabi and how these lovely people have come to be here. Quite a story about phosphate mining and its effect on Banaba.

Rabi has some of the best remaining bush in Fiji. There are some wonderful walks. Ask for Jack. He is about 13 or 14 and is related to Taketi. He is a good kid and loves to help. I am sure he would take you for a guided bush walk.



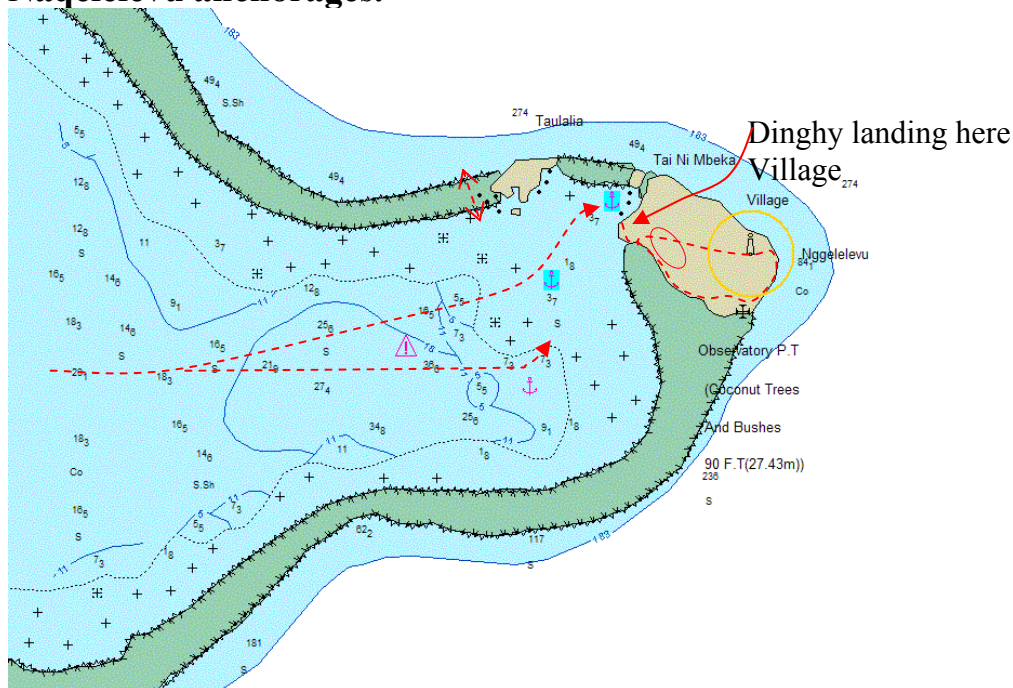
Budd Reef is great in quieter weather. Strong trades affect the anchorages too much. There can be some good diving here. People are hospitable.

Naqelevu.



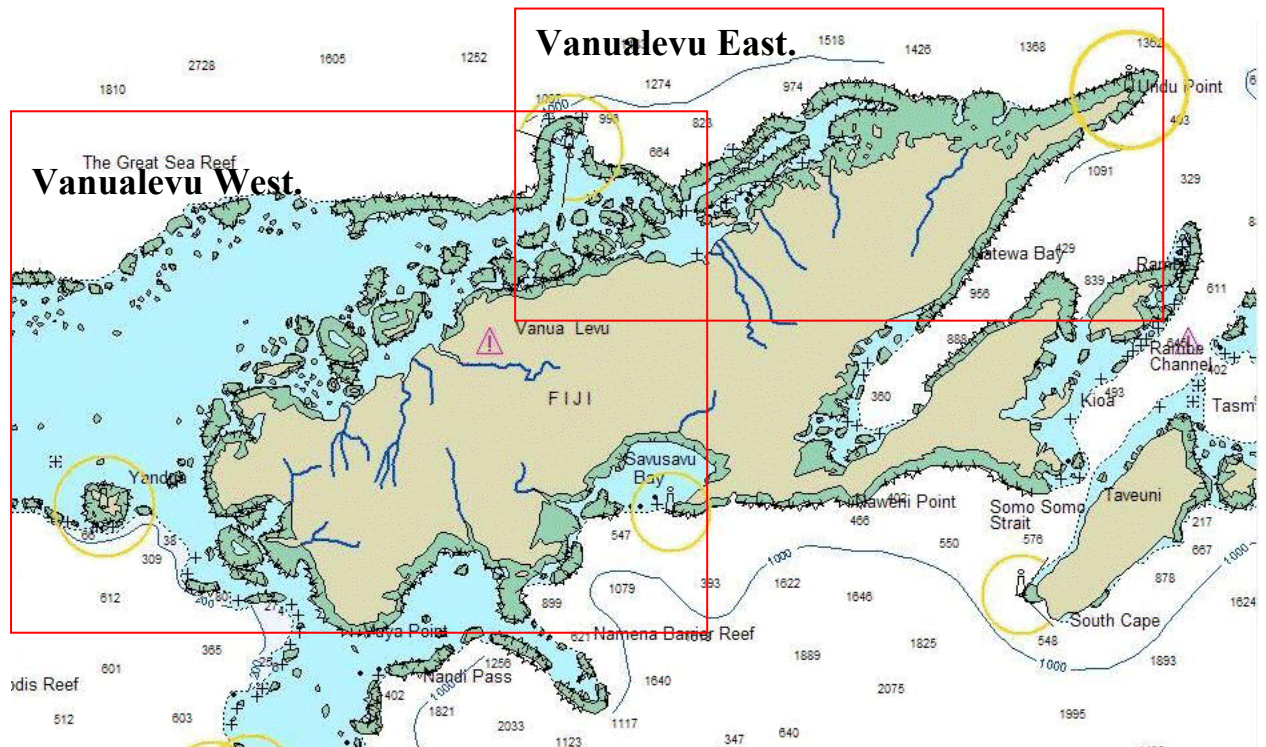
Naqelevu is a wonderful remote visit if the trades are not too strong. Depart from Motawa in Rabi and head here before rounding Udu and heading along the North coast of Vanualevu. It is about fifty miles to Naqelevu. . If you arrive too late in the day to transit the twelve miles across the lagoon you can find good anchorage in sand behind the sand cay just to the East of Rendell Pass. From Naqelevu it is easy to continue East. Unless you can anchor in behind the Island the anchorage tends to be about the same as North Minerva. You can only access the anchorage close to the island at high water. Once there it is deep enough. There may be some people in the village. The Island is owned by mataqali from Wairiki on Taveuni and almost all of the people are now there. Introduce yourself to Seba if he is still there. There is good snorkelling here inside and outside the reef. There is very easy dinghy access over the reef in the bight on the North East end. Ask someone to show you the track to the lighthouse. There is a great view over the whole atoll from there. Boobies nest at Naqelevu and there are coconut crab here.

Naqelevu anchorages.



Vanualevu

North Coast

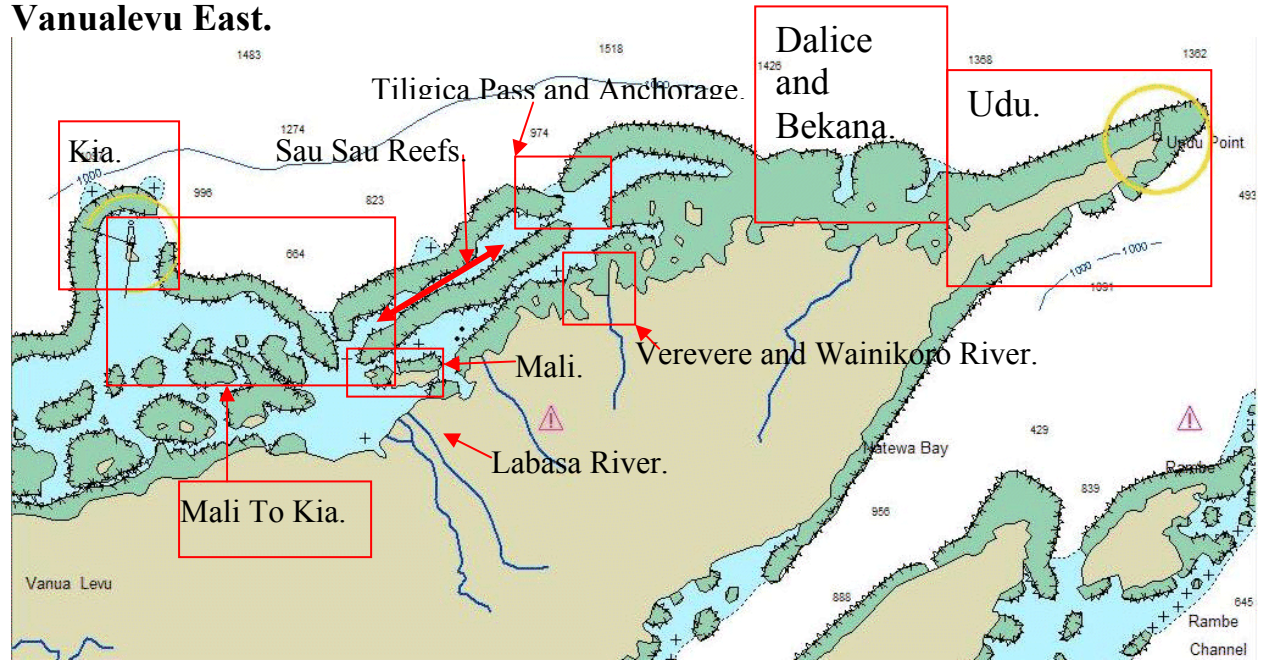


Spindrift has only touched on this coast and anchored and explored only a few places. You will find countless others in this most sheltered part of Fiji. Many will never have been visited before by cruisers. There is years of exploring to be done here. The Great Sea Reef is a must visit for divers.

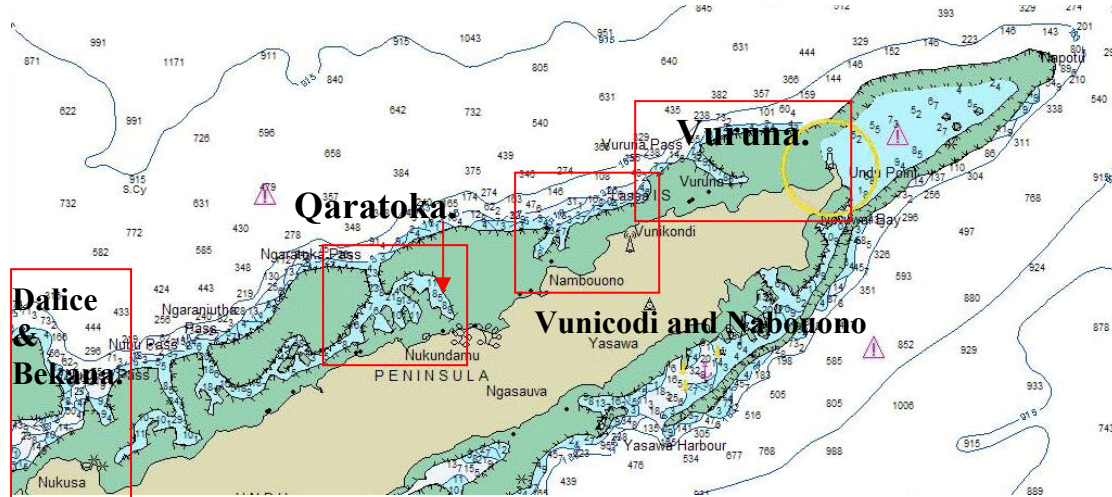
Generally the inshore waters have low visibility. This improves to excellent as one approaches the Great Sea Reef. The inshore waterways west of Labasa were well beacons in 1995.

Over the whole North coast of Vanualevu during the day in trade wind conditions the breeze turns more to the East and sometimes Northeast turning back to Southeast at night. Daytime, especially afternoon breezes are stronger but always less than forecast. Usually the Rotuma forecast is more accurate for this coast. The locals agree with this. If the breeze on the south coast is 20Kn there will only be 10Kn on this North coast.

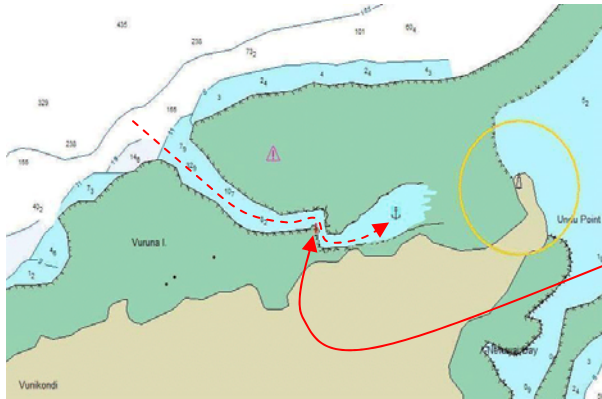
Vanualevu East.



Udu.



Vuruna.

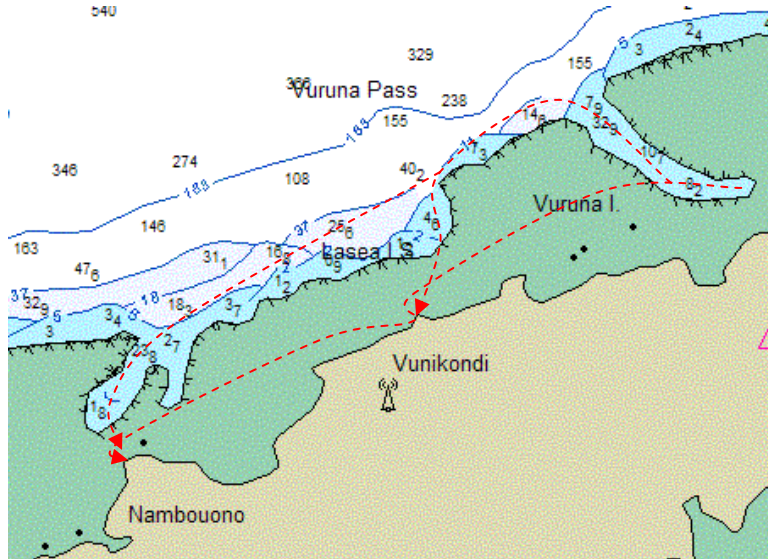


Vuruna is a beautiful safe anchorage in sand. Take care around the Eastern reef shoulder approaching the pass from the sea. It protrudes a bit too far for comfort. The kink in the pass has strong current when the tide is ebbing but can still be negotiated. There was a short pole on the inside of the starboard turn.

Be prepared to stay a while. Do Sevusevu at Vunicodi. It is the major

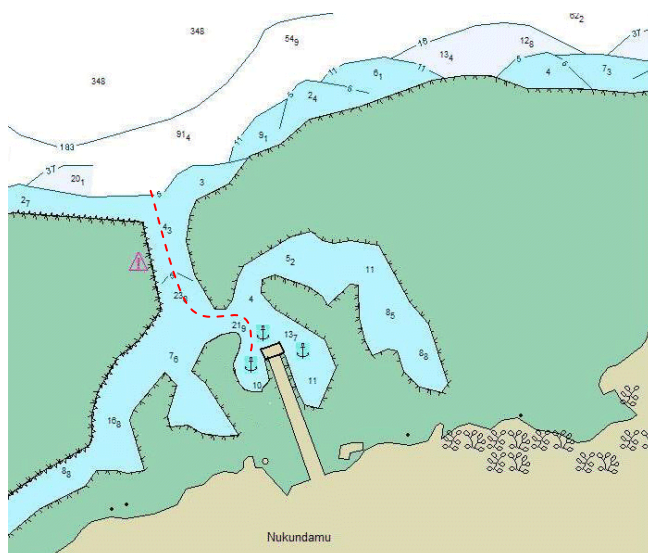
village of the three so Sevusevu will cover all. (*Vunicodi, Nabouono, Nukudamu.*) Walk to the lighthouse at Udu and also visit Yasawa on the South coast. At Vunicodi there is a weather station that is worth a visit. Good views. It is fun to explore the Udu lagoon with good diving inside and outside reef. There is good shelling here in sand.

Vunicodi and Nabouono.



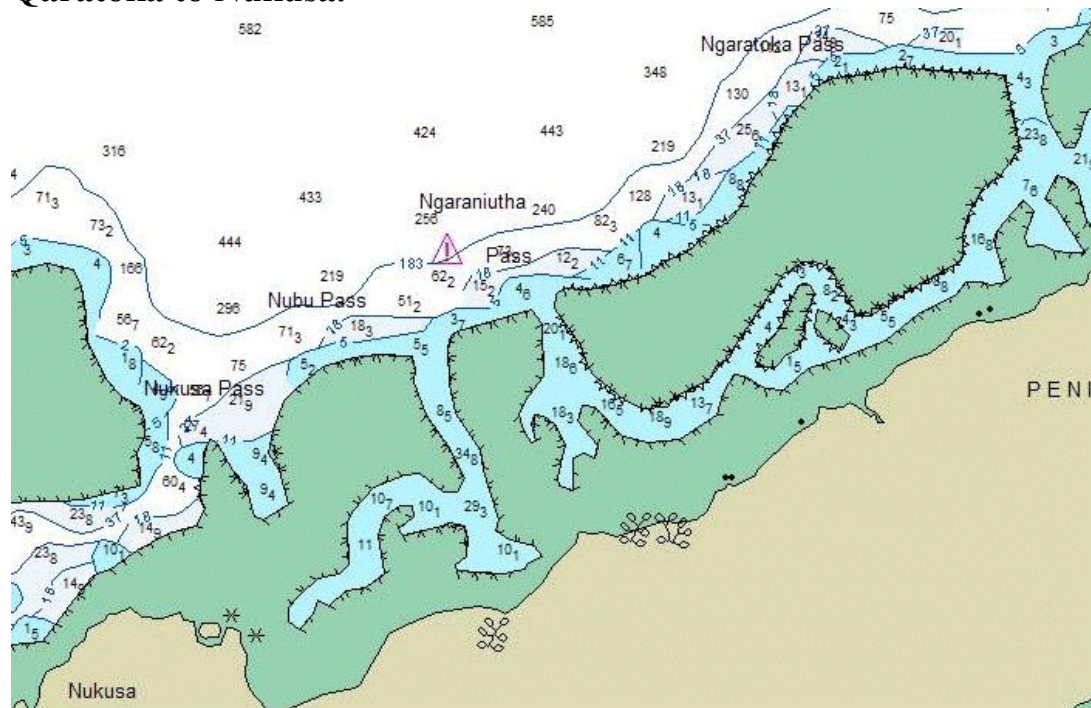
With half tide or above one can visit Vunicodi and Nabouono by travelling by dinghy inside the reef. If it is too shallow go out Vuruna pass and cross the reef outside Vunicodi where it is deeper. Nabouono is similar.

Qaratoka.



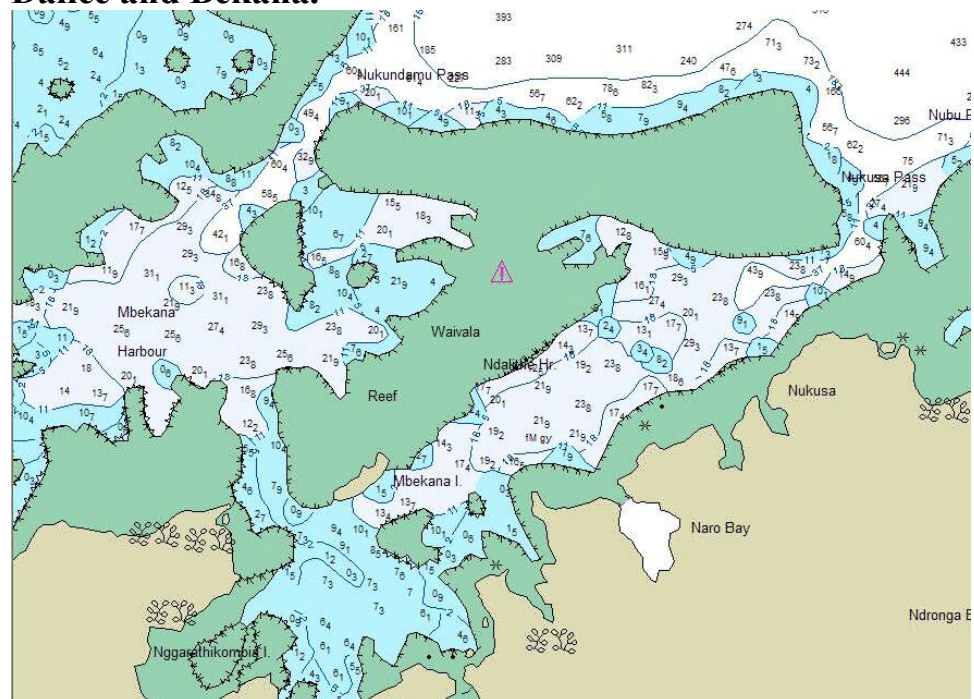
There is a shallow entrance to the Qaratoka Pass. It is deep enough, but spooky. There is a beacons channel to the wharf. Take good care if anchoring to the West of the wharf as the area is very small. Water visibility is poor but it is the best anchorage. It is best viewed at low tide. The causeway to the wharf has a windbreak of casuarinas trees that protect the anchorage. Visit Nukudamu village and the old mine.

Qaratoka to Nukusa.

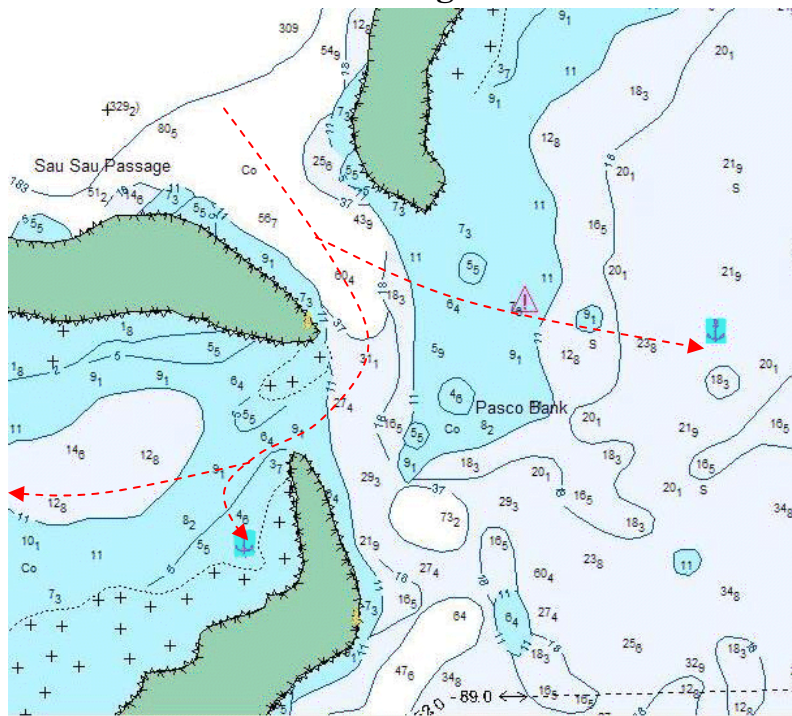


It appears that one can transit inside the reef from Qaratoka to Garaniuca. We have not tried it nor have we visited Nubu which also looks good for a visit. This is a good chance to try that new portable sounder in the dinghy. Nukusa Pass is straight forward and scenic with Nukusa village to port.

Dalice and Bekana.

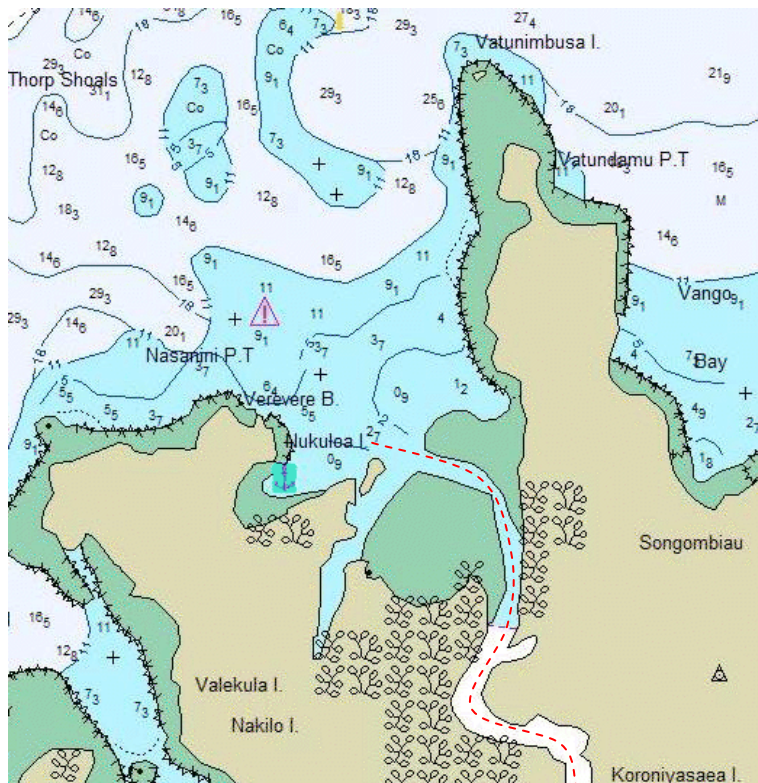


Sau Sau Pass and Anchorage.



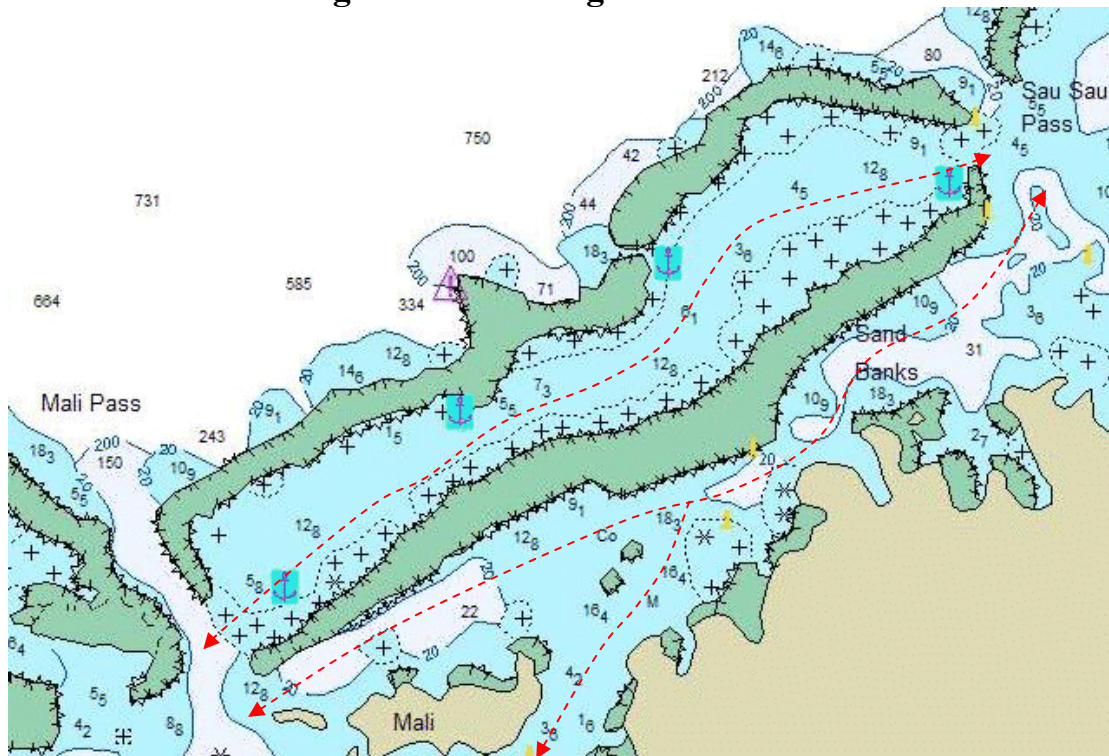
This is the beginning of the Great Sea Reef passage to Mali.

Verevere and Wainikoro River.



Anchor in Verevere and explore the Wainikoro River by dinghy. Verevere Bay is more sheltered than the bay opposite (*No Name*) in SE winds. Depart two to three hours before high water. We went about ten miles up. A short way up the river passes under a rail bridge. If you stop here you can walk west to a shop.

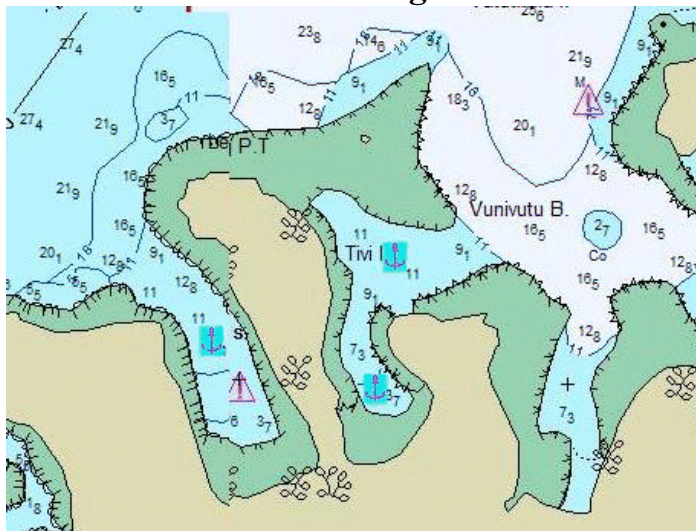
Sau Sau Reefs Passage and Anchorages.



The Sau Sau Reefs are a wonderful explore and the easiest way to access the Great Sea Reef. (*The Third largest coral reef on Earth.*) This is a sandy route with few coral bombs and clear shallow water. One can anchor anywhere as it is very sheltered. The South West end is easier transit with the tide in. However we did it at low water drawing 1.8m. We had a minimum depth of 3.7m. When we exited and anchored at Vorovoro the villagers at Nakawaga told us that they had never before seen anything other than a punt use this excellent passage.

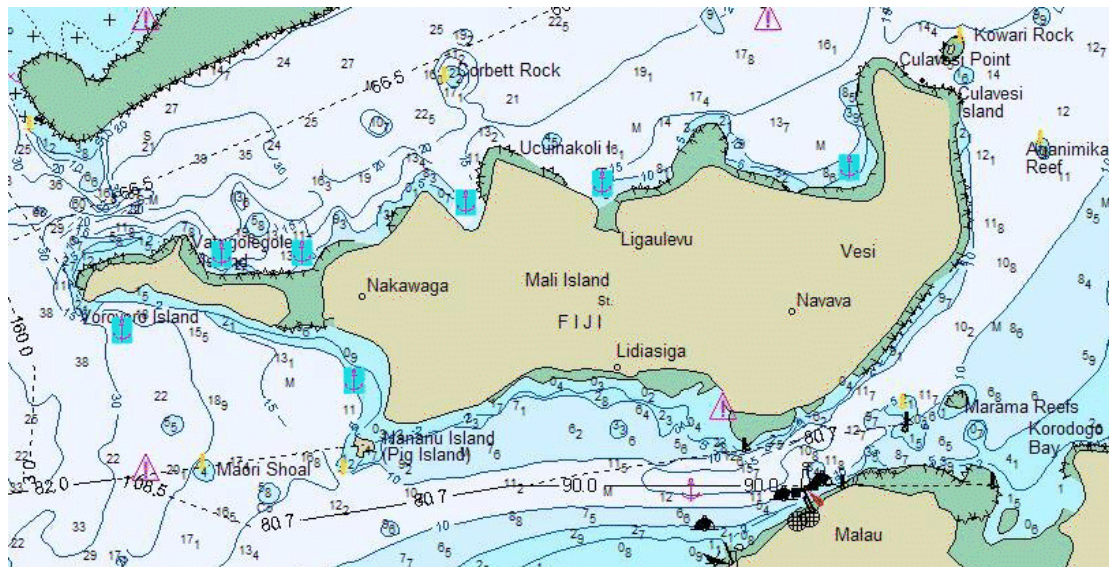
The inside track is easy also and beacons and gives access to Tivi and Nasealevu.

Nasealevu. Tivi Anchorages.



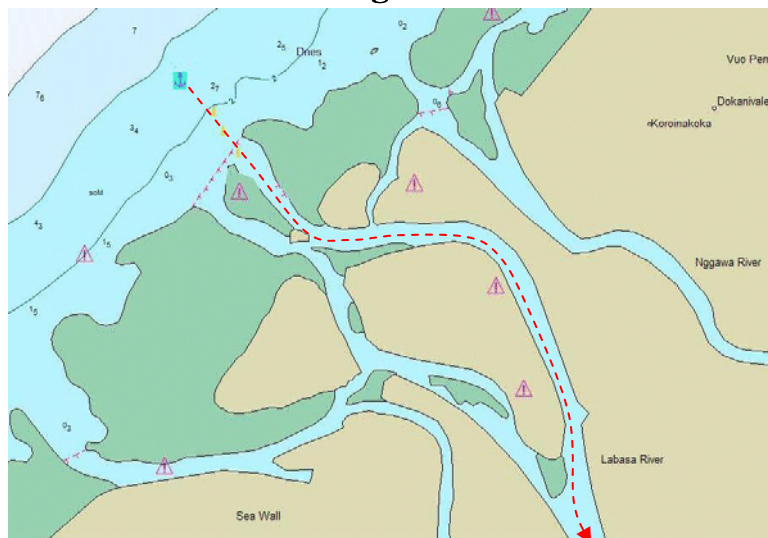
As all along this coast there is a strong Indian community. The people on Tivi Is and at Nasealevu are very welcoming and it makes an interesting cultural stop.

Mali and Vorovoro Islands.



We like to anchor on the North side of Vorovoro Island but have used all the others on occasions. Visit Nakawaga and do Sevusevu for this area. There is a lovely walk on from there to the Primary School at Ligaulevu which takes about an hour each way. If you ask the Chief you may be able to jerry jug water from a tank on the Vorovoro. We did and it is good rain water.

Labasa River Anchorage.



This is a fun river excursion to buy groceries and veges from the Labasa Market. Go at half tide or above so that the landing is not too muddy at Labasa. It takes about an hour at displacement dinghy speed.

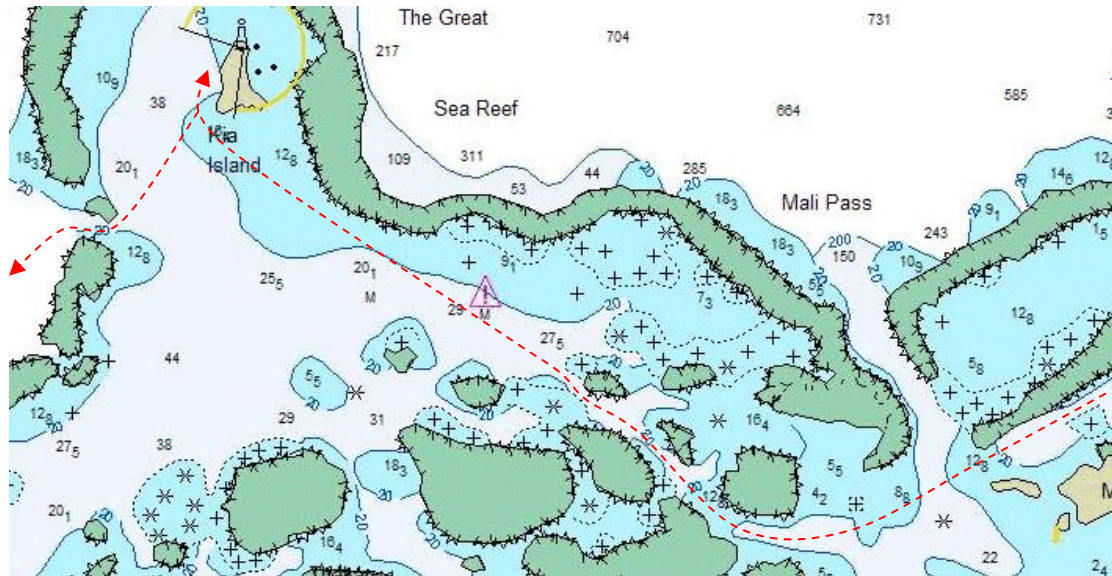
This market is even more interesting than Suva or Savusavu.

We just anchor Spindrift in front of the river entrance. It is shallow, muddy and quite a long way out. The holding has been good even in stronger trades.

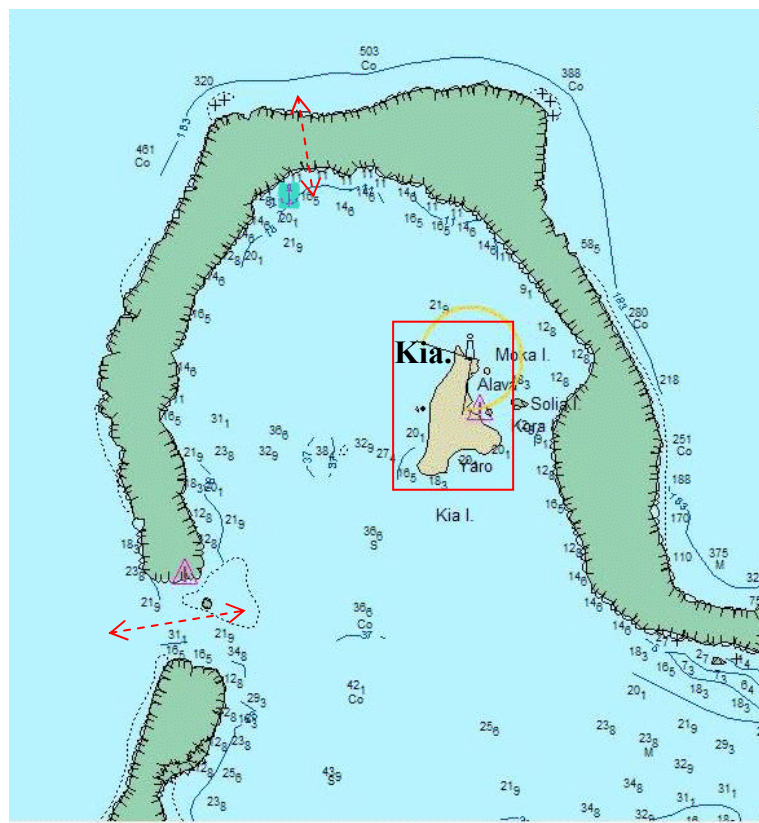
Mali To Kia.

Instead of following Calder there is a beacons passage beginning about a mile West of Vorovoro Island just on the West side of Round Reef. (*Caku-Ni-Guru*). Keep the three beacons to port when going to Kia. Even in poor or no water visibility this is passage can easily be navigated. See the following chart.

Mali To Kia And On.

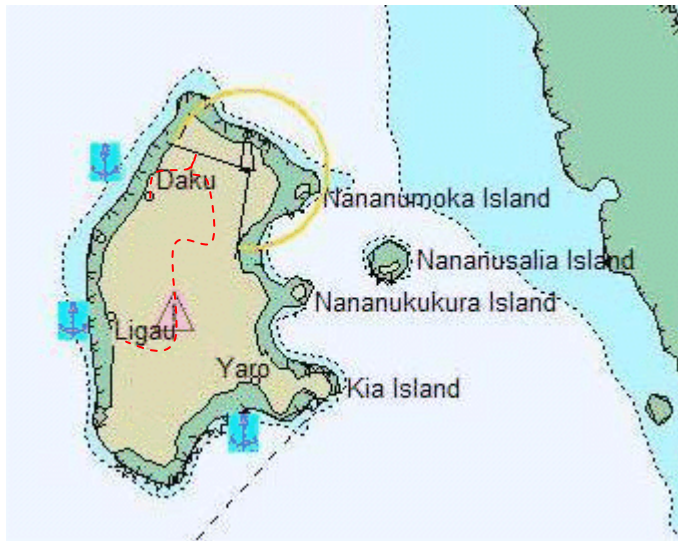


Kia and Reefs.



There is some very good spear fishing here. It is also a lot of fun if you take some locals with you. Savé is a good boatman so ask him if he would like to cover you in your dinghy. Loads of people in the water makes for loads of fun and keeps the sharks further away. There is good dinghy access across the reef in the North of the lagoon.

Kia Anchorages.



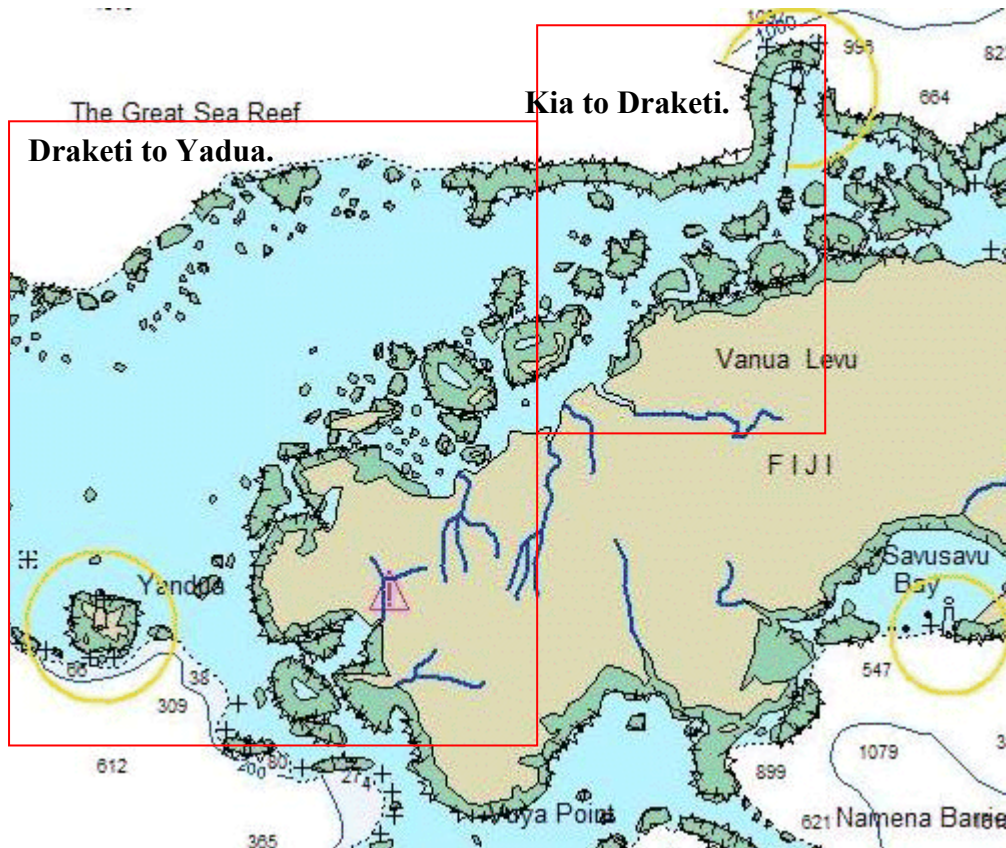
Visit Savé and Meri at Ligau. We have visited on two occasions. Say hullo from us and Spindrift.

Also visit Daku and Yaro. The villages and people on this Island are delightful.

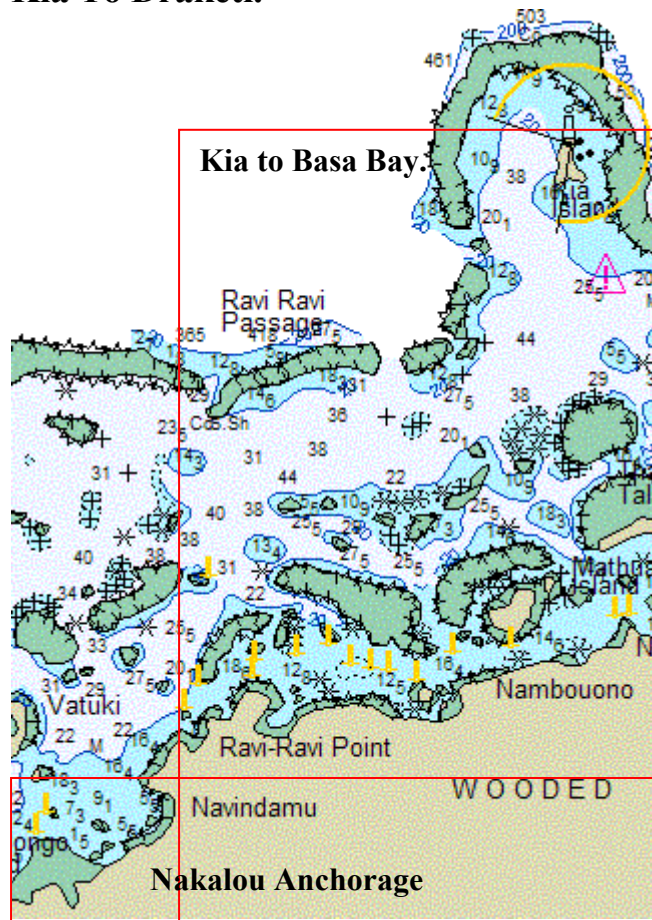
Take the spectacular walk from Daku to the Island summit. There you can see an old cannon and a cairn that was built more than 100 years ago to commemorate the end of the Fijian wars and cannibalism.

The wooden mangrove pole was put there then according to the locals. Also on the walk and quite apart from the spectacular view you can see the old refuge sites of the villagers during the Fijian wars and black-birding times. This part of the walk is the long way back to the village and apart from one short, more difficult climb is a much easier route than the steep climb to the summit. The short way back directly down the hill you came up from Daku.

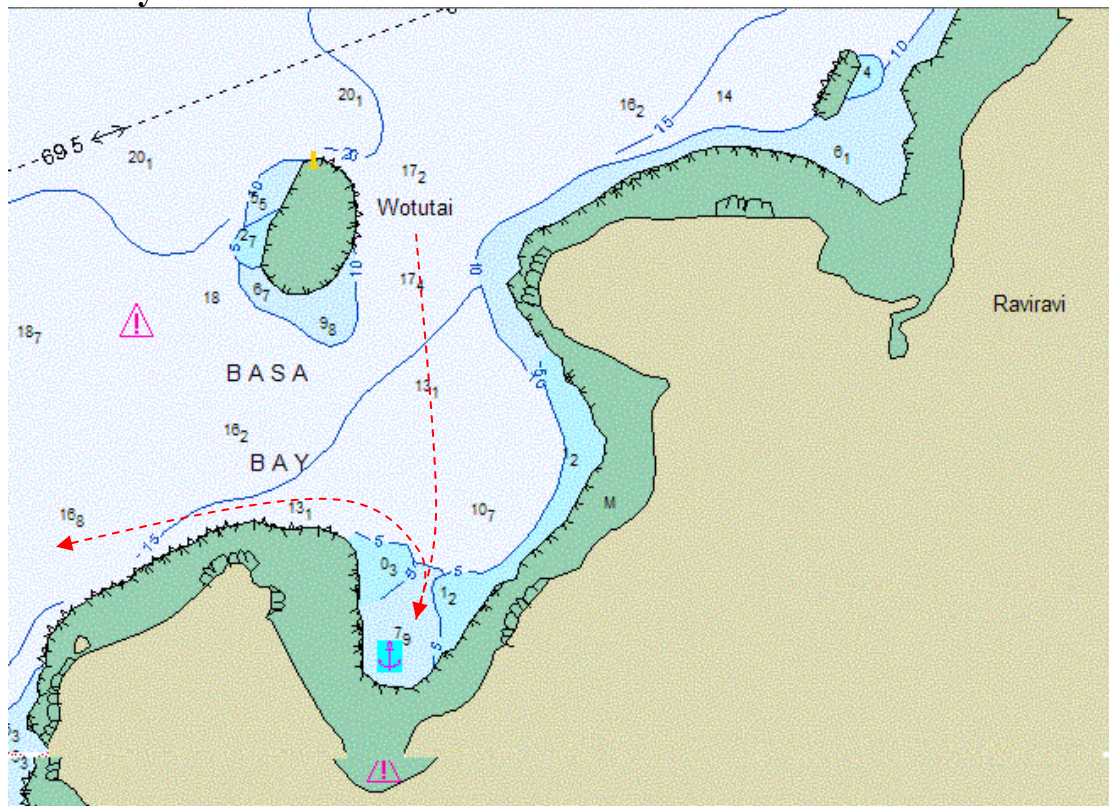
Vanualevu West.



Kia To Draketi.

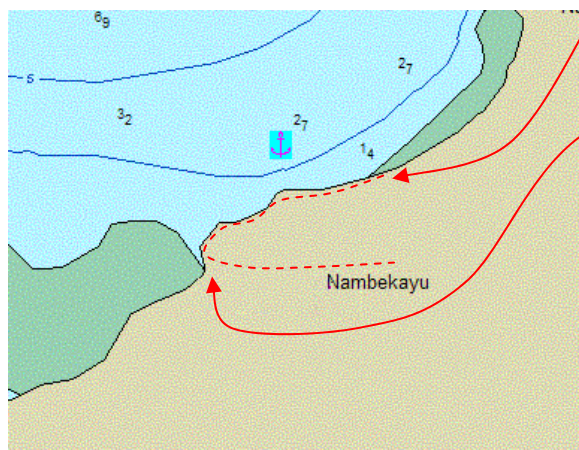


Basa Bay.



Basa Bay area is freehold land so there is no need for Sevusevu just here. At the head of Basa Bay there is a dinghy pass in the mangroves that leads to Arthur and Beatrice Branburgh. Corbetts live on the port hand side of the bay. We have not visited them but we did have a pleasant cuppa with Beatrice in 1995. There is a pleasant walk from their house up onto the hill behind with a grand view West over Navidamu to Draketi and Nabakavu Village on the chart but known as Nakalou.

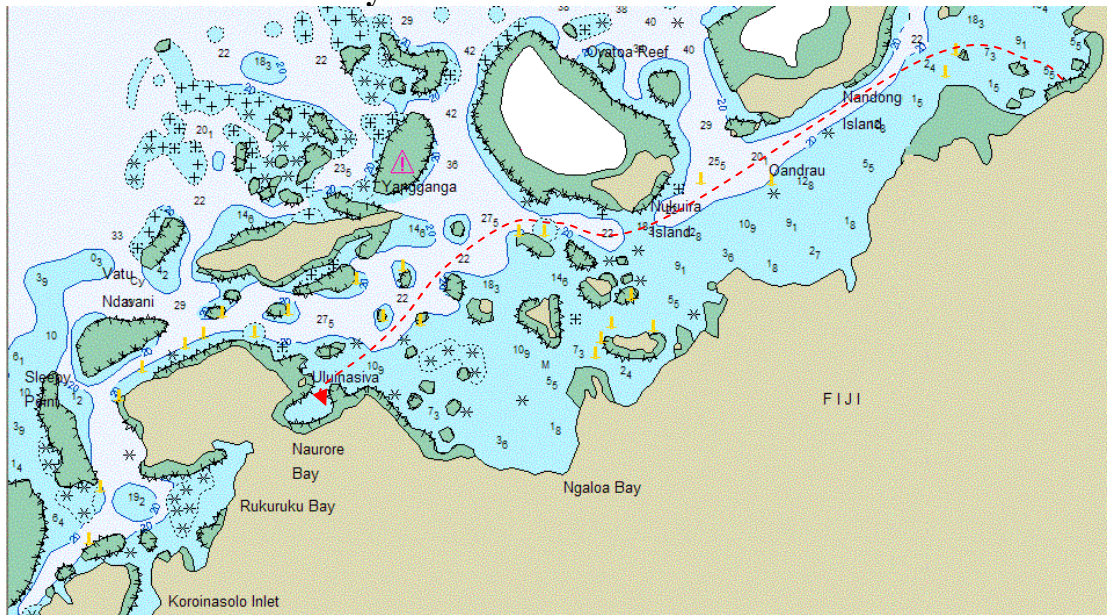
Nakalou Anchorage.



Leave dinghy here on the sandy beach and walk to the village or take it to the village landing here.

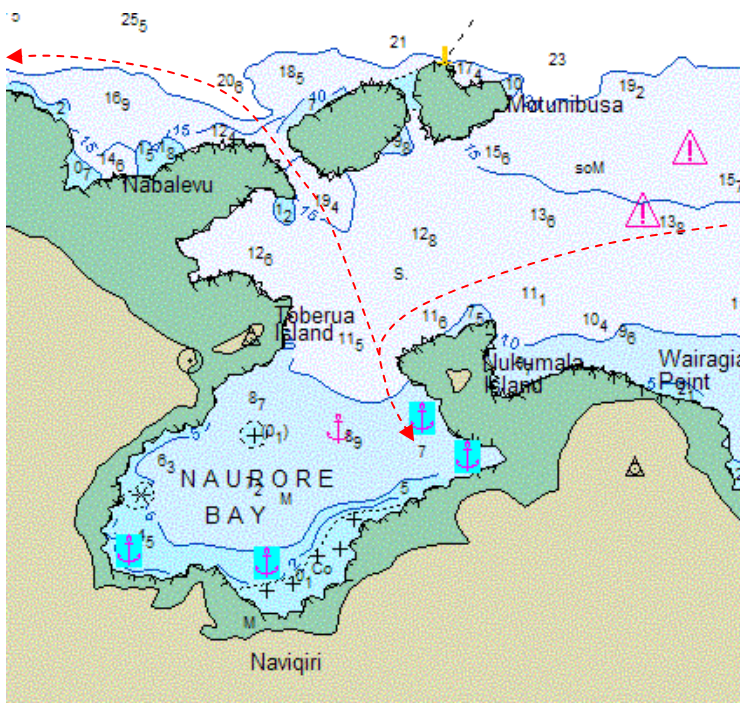
Visit Nakalou to do Sevusevu for the area and your dinghy trip up the Draketi River. Nakalou is an interesting double village. That's right, two villages joined. Each part has its own name. Nakalou is one but I have forgotten the other. In all it is a large village. The people were very welcoming and were interested in us.

Draketi to Naurore Bay.



Follow the beacons channel along this route. Ships use it and it was well marked in 1995. There must be a number of great spots to visit along this part as well as an almost untouched part of the Great Sea Reef. We just did not have enough time on our cruises in 1994 and 1995 to have a good look at this coast. This is the route we took both times.

Naurore.



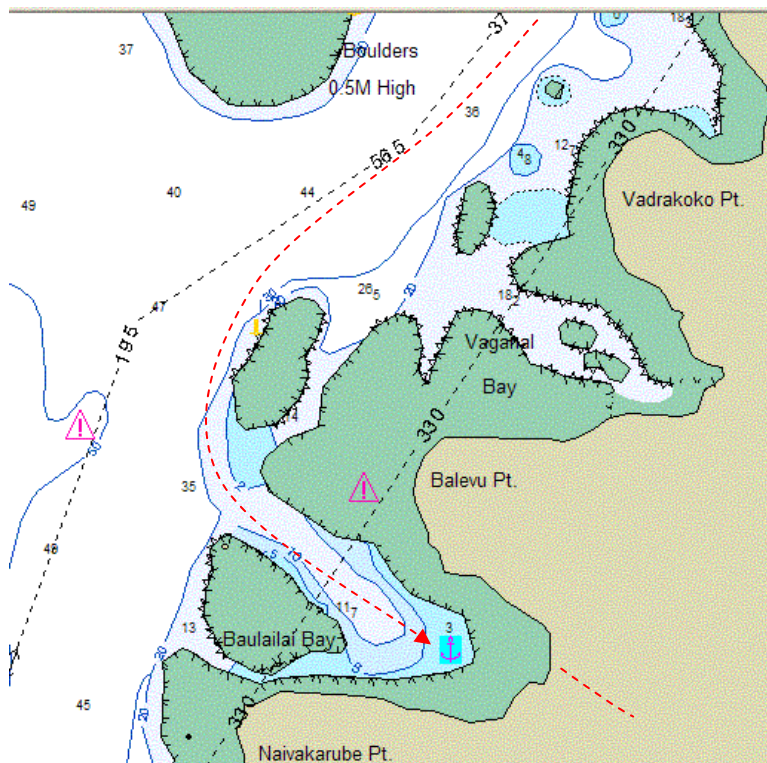
Naurore has a very good anchorage just to the South of Nukunua Island in sand. Naurore Bay provides protection from all wind directions although a strong Northerly would not be so good. This is the least windy part of the Bay in NE to SE winds. We would also like to visit the village here and stay a while and visit Naviqiri village.

Nauore To Baulailai



This has always been a calm almost windless passage for us. It is also very scenic. Look for the Monkey Face in the rocks on the high cliff. We have not visited Naivaka but would like to do so. This is a remote part of Vanualevu. The village had many traditional huts in 1995. There does not seem to be any easy anchorage here as it is quite deep. It may be best to anchor in Rukuruku Bay and visit from there.

Baulailai



Baulailai is a good place to stop before leaping off Vanualevu and heading down to Nananu Passage on Viti Levu or across to the notoriously windy Yadua. It can be a breezy bay with strong offshore winds in strong trades. While you are there go ashore and walk about 500 metres along the road to visit the Indian family there. They are very welcoming and are caretakers for the foreign owners.

Where to next?

The options from here are to return to Savusavu by cruising around the Vanualevu coast, visiting Yadua visiting the Yasawas or continuing on down to Viti Levu via one of the many navigable passes: Nananu, Malake, Nukurauvula, Manava or Yavena. We have only used Nananu Pass. It is not the easiest and has been very windy. Friends have used Nukurauvula and say that it is much better to use that one if just in transit to Lautoka. The course is easier from Baulailai and there is less wind at the pass.

May your impellor not fail in a pass and the only bad wind be from you.

Notes:

Sevusevu should be done when staying in an area. Also it should be cancelled when you leave. No different to visiting a Maeae in NZ. There it is called Powhiri.

Cancellation only involves a visit to say thanks and goodbye. If you have stayed for a long time (Two weeks or more) it is better to give plenty of warning of when you intend leave as the villagers may want to have a function) No different to visiting a Maeae in NZ. There it is called Powhiri.

Pronounce Fijian

<i>b</i> as <i>mb</i> .	e.g. Rabi as Rambi or perambulator.
<i>c</i> as <i>th</i> .	e.g. Laucala as Lauthala, Cobia as Thombia, or the.
<i>d</i> as <i>nd</i> .	e.g. Nadi as Nandi.
<i>g</i> as <i>ng</i> .	e.g. Gau as Ngau, just as in Ngaruawaihia or

bringing. Note that there is no hard g sound in any Pacific language, except when it is spelt with a *q*. See below.

<i>q</i> as <i>ngg</i> .	e.g. Naqelevu as Nanggelevu. The first <i>g</i> is the <i>ng</i> sound and the second <i>g</i> is a hard <i>g</i> as in <i>go and finger</i> .
--------------------------	--

Banaban

<i>b</i> as <i>p</i> .	
<i>Ti</i> as <i>s</i> .	e.g. Rotite as Rosté.

